

19 March 2008

PRESS RELEASE

EURO AREA SECURITIES ISSUES STATISTICS: JANUARY 2008

The annual growth rate of the outstanding amount of debt securities issued by euro area residents decreased from 9.1% in December 2007 to 8.5% in January. For the outstanding amount of quoted shares issued by euro area residents, the annual growth rate was 1.5% in January 2008, the same as in December 2007.

New issuance of debt securities by euro area residents totalled EUR 1,195 billion in January 2008 (see Table 1 and Chart 1). As redemptions came to EUR 1,126 billion, net issues amounted to EUR 69 billion (see Table 1). The annual growth rate of outstanding debt securities issued by euro area residents decreased from 9.1% in December 2007 to 8.5% in January (see Table 1 and Chart 3).

As regards the sectoral breakdown, the annual growth rate of outstanding debt securities issued by non-financial corporations increased from 8.8% in December 2007 to 10.6% in January (see Table 2 and Chart 4). For the monetary financial institution (MFI) sector, this growth rate decreased from 10.5% in December 2007 to 9.9% in January. The annual growth rate of outstanding debt securities issued by financial corporations other than MFIs decreased from 28.8% in December 2007 to 27.4% in January. For the general government, this growth rate decreased from 2.8% in December 2007 to 2.3% in January.

As regards the maturity breakdown, the annual growth rate of outstanding short-term debt securities decreased from 26.0% in December 2007 to 25.7% in January (see Table 1 and Chart 3). The annual growth rate of outstanding short-term debt securities issued by MFIs decreased from 34.5% to 32.1% during the same period (see Table 2). For long-term debt securities, the annual growth rate decreased from 7.4% in December 2007 to 6.7% in January. The annual growth rate of outstanding long-term debt securities issued by MFIs decreased from 7.1% to 6.5% during the same period. The annual growth rate of outstanding fixed rate long-term debt securities decreased from 4.3% in December 2007 to 3.4% in January. The annual growth rate of outstanding variable rate long-term debt securities was 15.3% in January 2008, the same as in December.

Concerning the currency breakdown, the annual growth rate of outstanding euro-denominated debt securities decreased from 9.1% in December 2007 to 8.6% in January. For debt securities in other currencies, this growth rate decreased from 8.7% in December 2007 to 7.8% in January (see Table 1).

The seasonally adjusted three-month annualised growth rate of outstanding debt securities issued by euro area residents decreased from 9.8% in December 2007 to 5.9% in January (see Table 3 and Chart 5).

New issuance of quoted shares by euro area residents totalled EUR 3.8 billion in January 2008 (see Table 4). As redemptions came to EUR 1.4 billion, net issues amounted to EUR 2.4 billion. The annual growth rate of the outstanding amount of quoted shares issued by euro area residents (excluding valuation changes) was 1.5% in January 2008, the same as in December (see Table 4 and Chart 6). The annual growth rate of quoted shares issued by non-financial corporations was 1.4% in January 2008, the same as in December. For monetary financial institutions, it decreased from 1.5% in December 2007 to 1.1% in January. For financial corporations other than MFIs, this growth rate was 2.9% in January 2008, compared with 3.0% in December 2007.

The outstanding amount of quoted shares issued by euro area residents totalled EUR 5,750 billion at the end of January 2008. Compared with EUR 6,364 billion at the end of January 2007, this represents an annual decrease of 9.7% in the value of the stock of quoted shares, compared with an increase of 6.3% in December.

Euro area including Cyprus and Malta

On 1 January 2008 Cyprus and Malta joined the euro area. This press release shows a consistent time series for securities issues for the enlarged euro area, with Cyprus and Malta included in euro area totals also for all statistics prior to 2008.

Unless specified otherwise, data relate to non-seasonally adjusted statistics. A complete set of updated securities issues statistics is available on the "Money, banking and financial markets" pages of the "Statistics" section of the ECB's website (<http://www.ecb.europa.eu/stats/money/securities/html/index.en.html>). These data, as well as euro area data in accordance with the composition of the euro area at the time of the reference period, can be downloaded using the ECB's Statistical Data Warehouse (SDW).

Data for the period up to January 2008 will also be published in the April 2008 issues of the ECB's Monthly Bulletin and Statistics Pocket Book. The next press release on euro area securities issues will be published on 18 April 2008.

European Central Bank

Directorate Communications, Press and Information Division

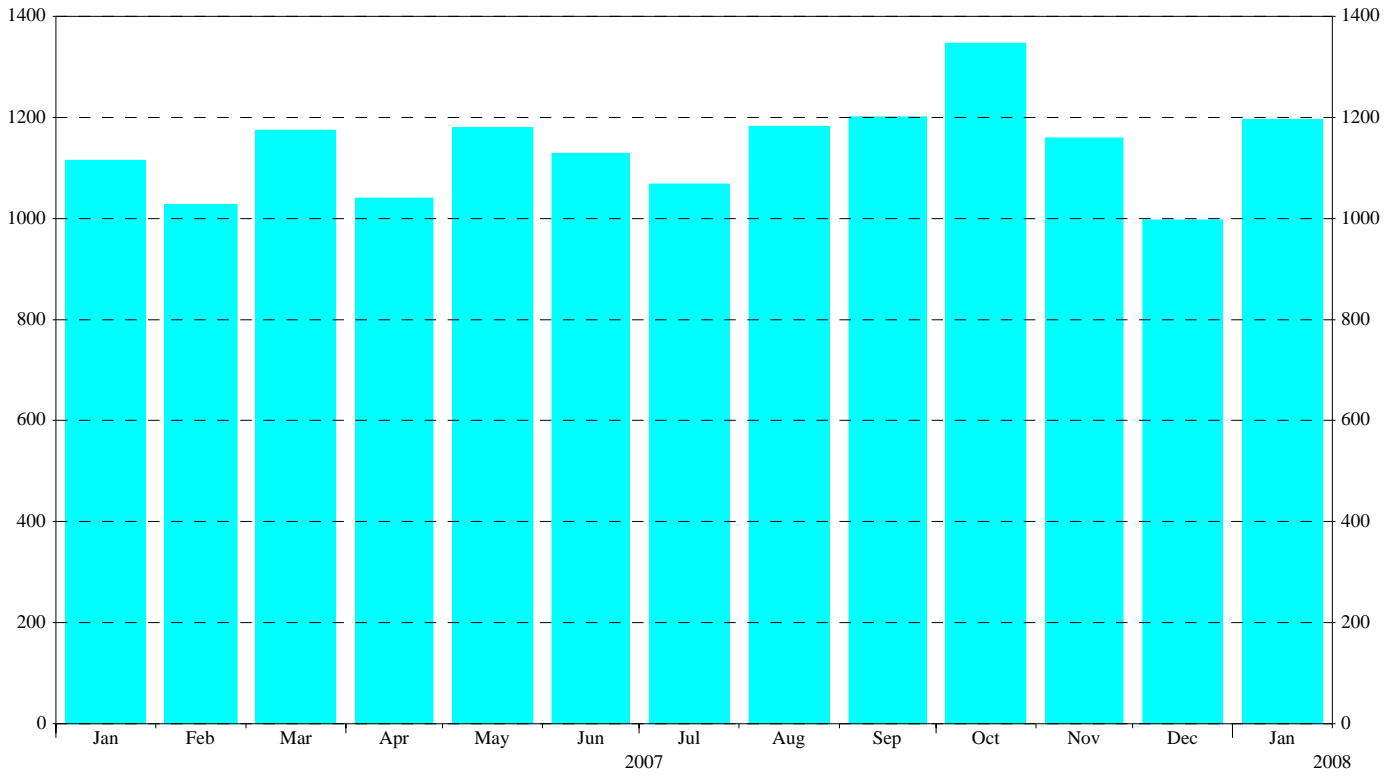
Kaiserstrasse 29, D-60311 Frankfurt am Main

Tel.: +49 69 1344 7455, Fax: +49 69 1344 7404

Internet: <http://www.ecb.int>

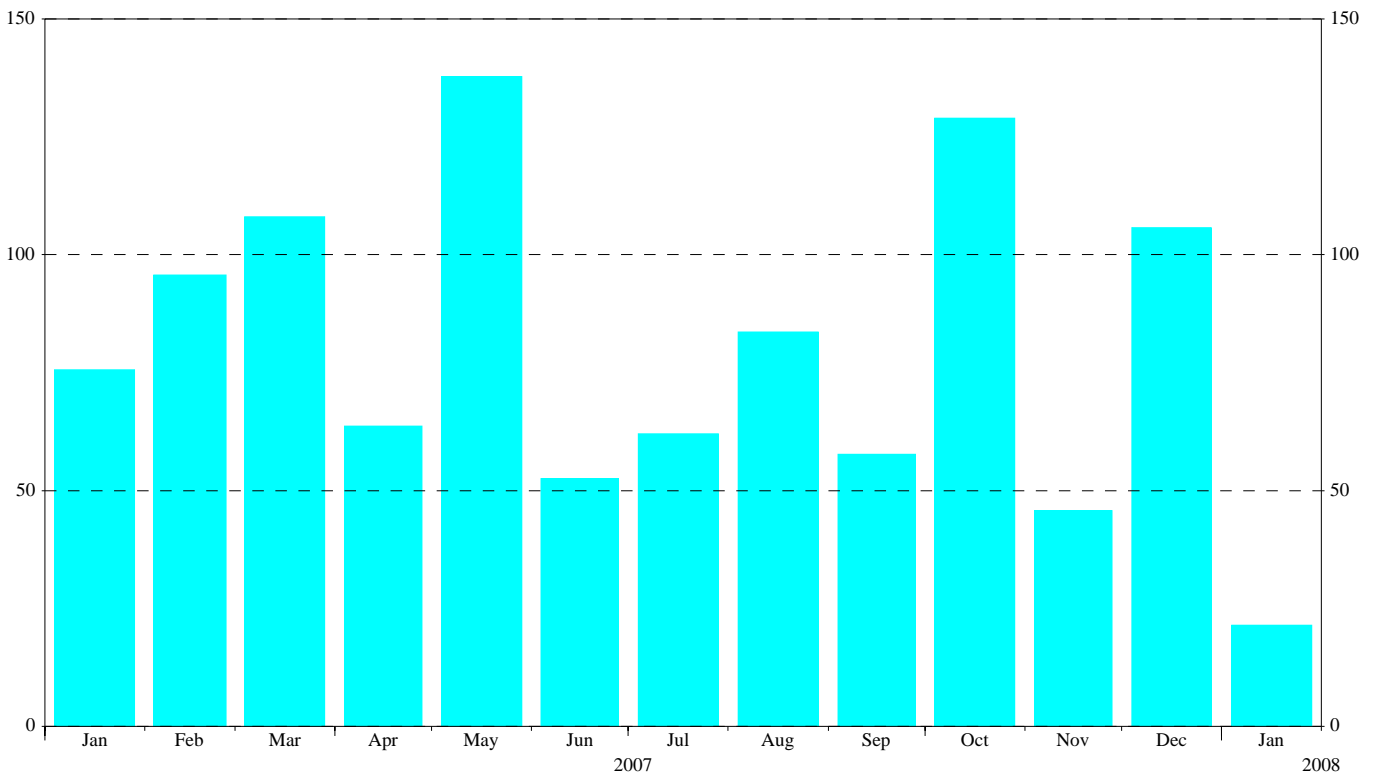
Reproduction is permitted provided that the source is acknowledged.

Chart 1: Total gross issuance of debt securities by euro area residents
(EUR billions; transactions during the month; nominal values)



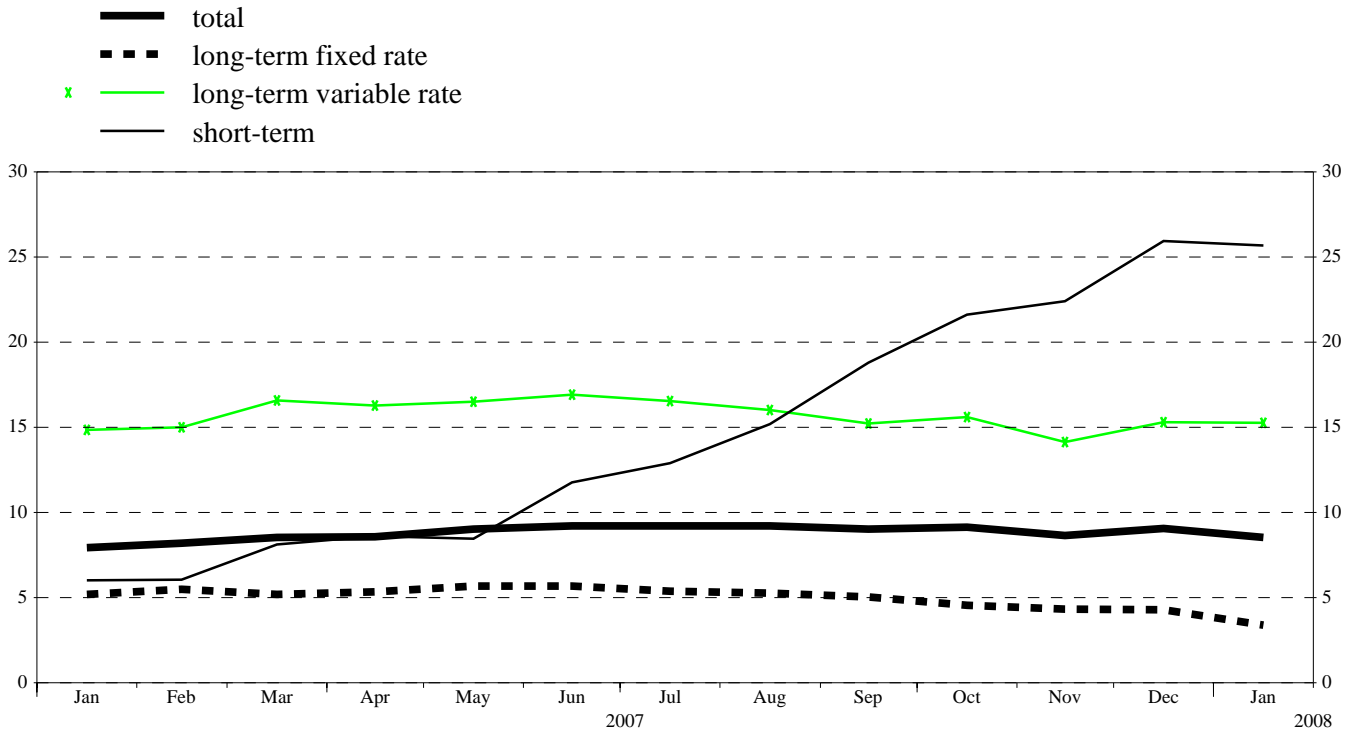
Source: ECB securities issues statistics.

Chart 2: Total net issuance of debt securities by euro area residents
(EUR billions; transactions during the month; nominal values; seasonally adjusted)



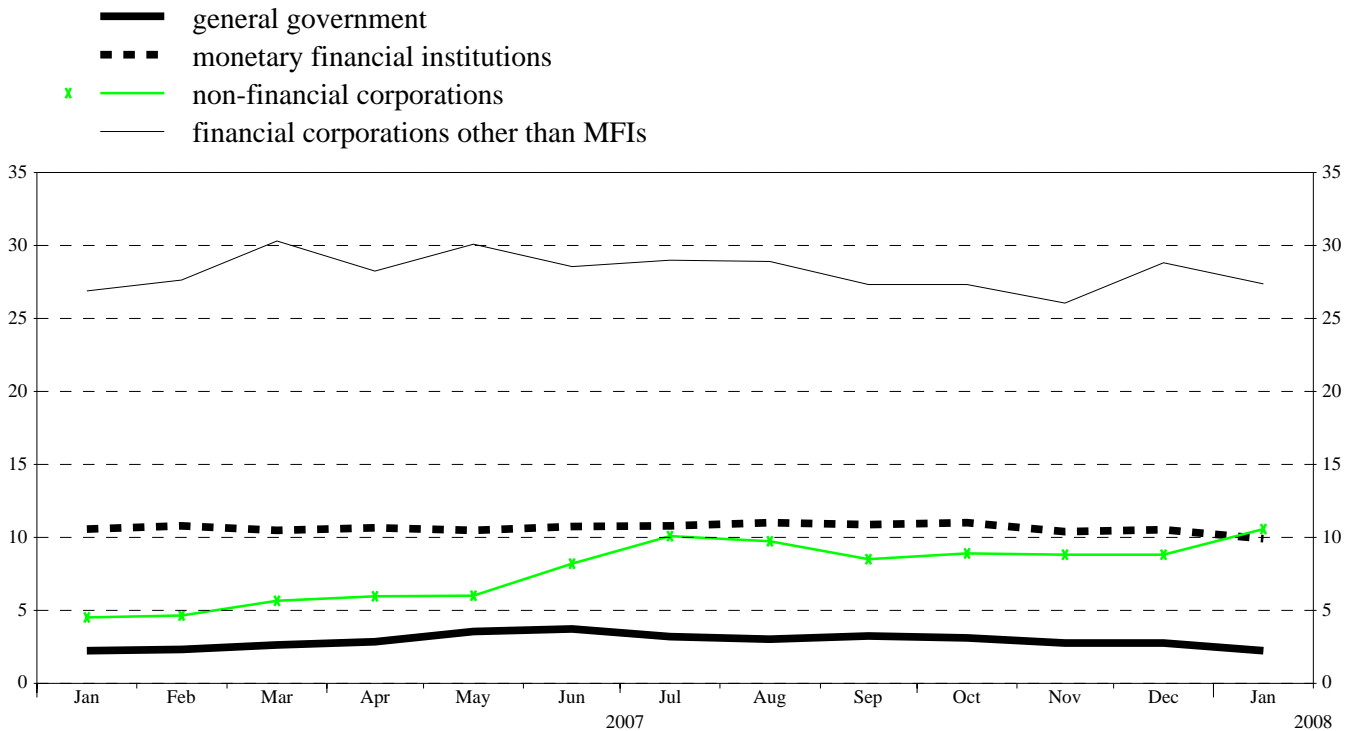
Source: ECB securities issues statistics.

Chart 3: Annual growth rates of debt securities issued by euro area residents, by original maturity
(percentage changes)



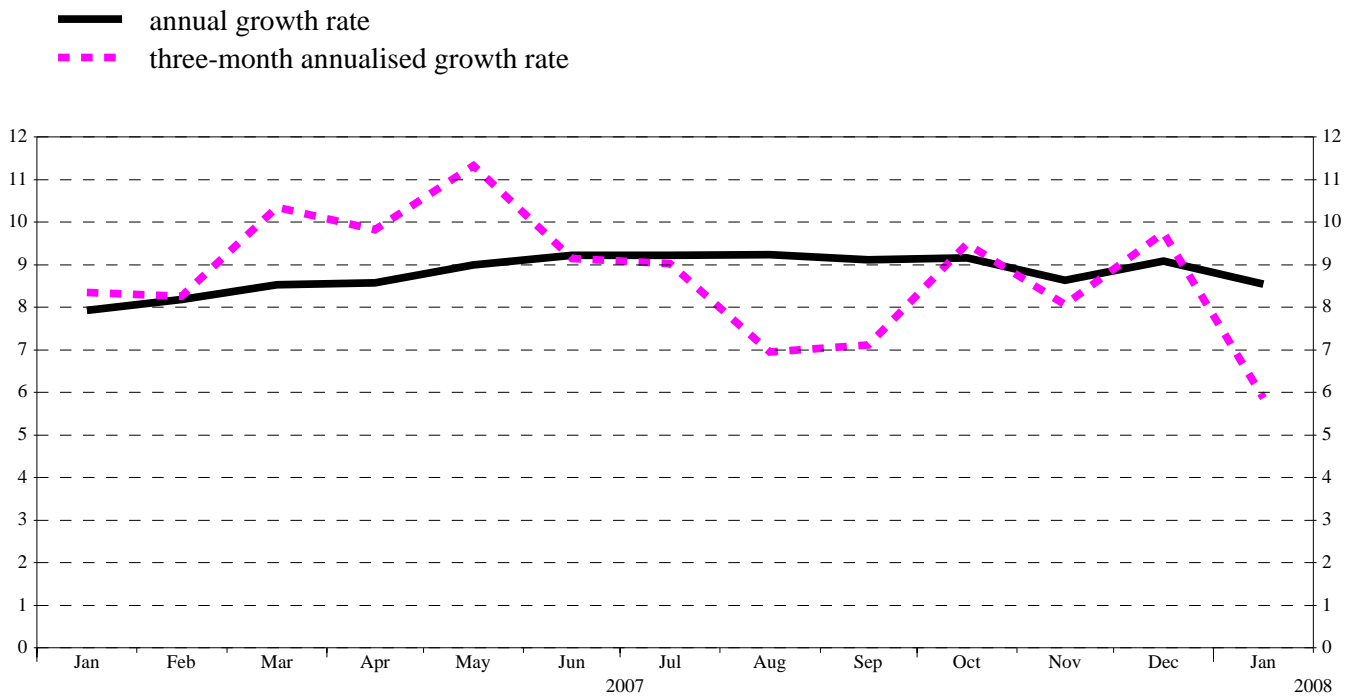
Source: ECB securities issues statistics.

Chart 4: Annual growth rates of debt securities issued by euro area residents, by sector
(percentage changes)



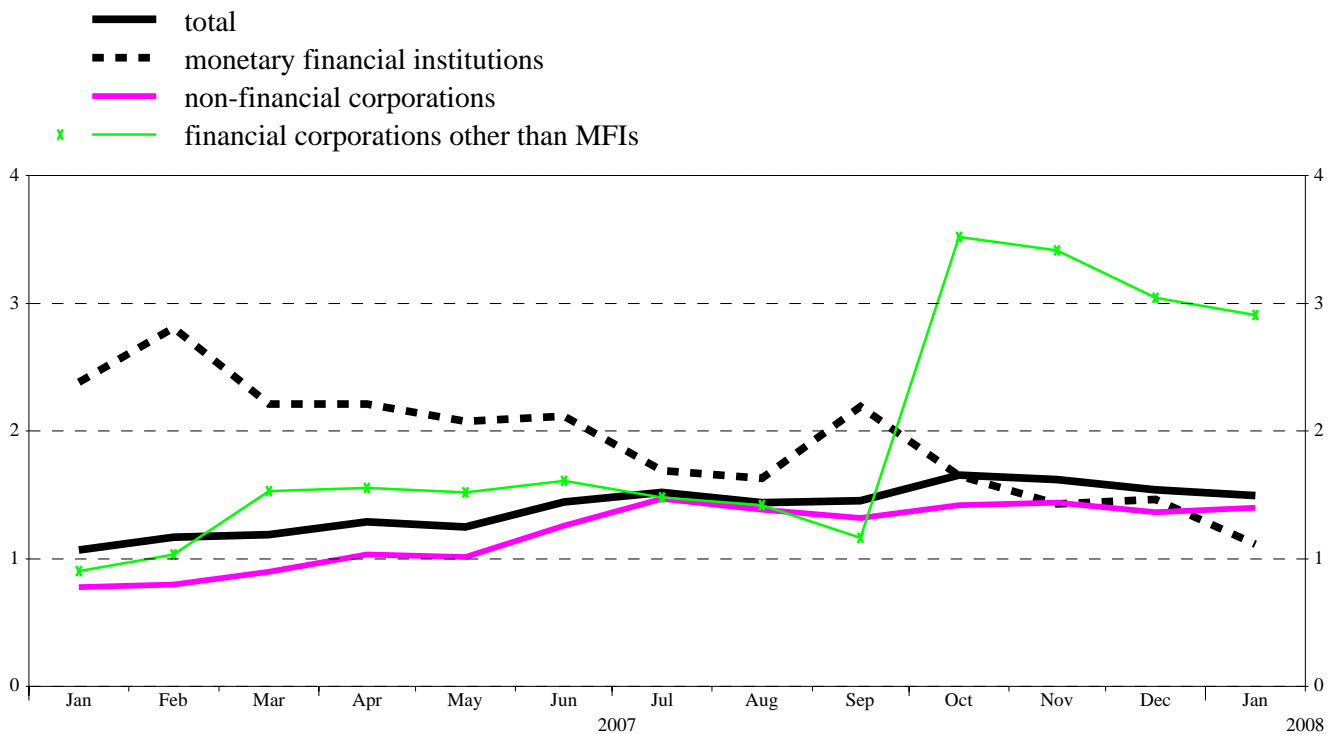
Source: ECB securities issues statistics.

Chart 5: Growth rates of debt securities issued by euro area residents, seasonally adjusted
(percentage changes)



Source: ECB securities issues statistics.

Chart 6: Annual growth rates of quoted shares issued by euro area residents, by sector
(percentage changes)



Source: ECB securities issues statistics.

Table 1**Debt securities issued by euro area residents,¹⁾ by currency and original maturity²⁾***(EUR billions; nominal values)*

	Amounts outstanding	Net issues	Gross issues	Redemptions	Net issues	Amounts outstanding	Gross issues	Redemptions	Net issues	Amounts outstanding	Gross issues	Redemptions	Net issues	Annual growth rates of outstanding amounts ⁵⁾											
	Jan. 2007		Feb. 2007 - Jan. 2008 ³⁾			Dec. 2007				Jan. 2008				2006	2007	2007 Q1	2007 Q2	2007 Q3	2007 Q4	2007 Aug.	2007 Sep.	2007 Oct.	2007 Nov.	2007 Dec.	2008 Jan.
Total	11,229.9	117.3	1,141.4	1,061.6	79.8	12,067.6	997.0	1,015.8	-18.8	12,138.1	1,195.4	1,125.9	69.5	7.5	8.8	8.1	8.8	9.2	9.0	9.2	9.1	9.2	8.6	9.1	8.5
of which in euro	9,980.7	98.5	1,083.7	1,012.0	71.7	10,784.3	954.0	955.3	-1.2	10,840.4	1,130.0	1,069.8	60.2	6.7	8.3	7.5	8.3	8.6	8.7	8.6	8.6	8.8	8.5	9.1	8.6
in other currencies	1,249.3	18.8	57.7	49.6	8.1	1,283.4	42.9	60.5	-17.6	1,297.7	65.4	56.1	9.3	13.8	12.9	13.9	13.4	13.8	10.8	14.0	12.5	11.9	9.8	8.7	7.8
Short-term	1,071.2	55.0	953.3	930.3	23.0	1,290.0	825.7	880.2	-54.4	1,361.4	1,005.8	938.9	66.8	5.3	13.1	6.3	9.0	14.5	22.1	15.2	18.8	21.6	22.4	26.0	25.7
of which in euro	905.2	47.2	917.3	895.5	21.8	1,105.9	793.9	842.2	-48.3	1,167.4	963.6	901.4	62.1	5.3	13.4	6.1	9.2	14.2	23.5	14.7	19.8	22.5	24.0	28.8	28.9
in other currencies	166.0	7.8	36.0	34.8	1.2	184.1	31.9	38.0	-6.2	194.0	42.2	37.5	4.7	4.9	10.8	6.5	7.1	15.8	14.1	18.2	13.1	17.0	13.5	10.7	8.2
Long-term ³⁾	10,158.8	62.3	188.1	131.2	56.8	10,777.6	171.2	135.6	35.6	10,776.7	189.6	186.9	2.6	7.7	8.3	8.3	8.8	8.6	7.5	8.6	8.0	7.8	7.1	7.4	6.7
of which in euro	9,075.5	51.3	166.4	116.5	49.9	9,678.4	160.2	113.1	47.0	9,673.0	166.4	168.3	-2.0	6.9	7.8	7.6	8.2	8.1	7.2	8.0	7.5	7.4	6.9	7.2	6.6
in other currencies	1,083.3	11.0	21.7	14.8	6.9	1,099.3	11.1	22.5	-11.4	1,103.7	23.2	18.6	4.6	15.1	13.1	14.9	14.2	13.4	10.2	13.3	12.4	11.1	9.2	8.4	7.7
of which fixed rate in euro	7,107.9	43.2	105.2	85.1	20.0	7,326.1	55.9	76.1	-20.3	7,304.9	121.8	141.8	-20.0	4.5	5.2	5.3	5.5	5.4	4.5	5.3	5.1	4.6	4.3	4.3	3.4
in other currencies	6,424.8	38.5	92.2	76.3	15.8	6,634.8	48.9	58.7	-9.8	6,610.9	108.6	130.0	-21.4	3.8	4.6	4.7	4.9	4.7	4.1	4.6	4.5	4.1	4.0	3.9	3.0
of which variable rate in euro	2,619.6	9.8	68.0	34.8	33.3	2,995.6	103.4	41.2	62.1	3,005.3	46.0	35.5	10.5	16.4	15.7	15.2	16.5	16.2	15.0	16.0	15.2	15.6	14.2	15.3	15.3
in other currencies	2,316.3	4.3	60.2	29.6	30.6	2,679.2	99.9	36.7	63.2	2,686.4	37.1	29.3	7.8	15.2	15.1	14.0	15.8	15.6	14.8	15.5	14.6	15.3	14.0	15.7	15.8
	303.4	5.5	7.8	5.2	2.7	316.3	3.4	4.5	-1.1	318.9	8.9	6.2	2.7	27.0	21.2	25.8	22.5	20.9	16.5	20.1	20.1	18.2	15.4	11.8	10.7

Source: ECB securities issues statistics.

1) Data coverage for euro area residents is estimated to be around 95% of total issuance.

2) "Short-term" means securities with an original maturity of one year or less (in exceptional cases two years or less). Securities with a longer original maturity, or with optional maturity dates, the latest of which is more than one year away, or with indefinite maturity dates, are classified as long-term.

3) The residual difference between total long-term debt securities and fixed and variable rate long-term debt securities consists of zero coupon bonds and revaluation effects.

4) Monthly averages of the transactions during this period.

5) Annual growth rates are based on financial transactions that occur when an institutional unit incurs or redeems liabilities. The annual growth rates therefore exclude the impact of reclassifications, revaluations, exchange rate variations and any other changes which do not arise from transactions.

Table 2**Debt securities issued by euro area residents in all currencies,¹⁾ by issuing sector²⁾ and maturity³⁾***(EUR billions; nominal values)*

	Amounts outstanding	Net issues	Gross issues	Redemptions	Net issues	Amounts outstanding	Gross issues	Redemptions	Net issues	Amounts outstanding	Gross issues	Redemptions	Net issues	Annual growth rates of outstanding amounts ³⁾											
	Jan. 2007		Feb. 2007 - Jan. 2008 ⁴⁾			Dec. 2007				Jan. 2008				2006	2007	2007 Q1	2007 Q2	2007 Q3	2007 Q4	2007 Aug.	2007 Sep.	2007 Oct.	2007 Nov.	2007 Dec.	2008 Jan.
Total	11,229.9	117.3	1,141.4	1,061.6	79.8	12,067.6	997.0	1,015.8	-18.8	12,138.1	1,195.4	1,125.9	69.5	7.5	8.8	8.1	8.8	9.2	9.0	9.2	9.1	9.2	8.6	9.1	8.5
MFIs	4,651.0	70.3	843.3	804.8	38.5	5,051.6	760.5	771.0	-10.4	5,103.1	887.7	838.3	49.4	9.1	10.7	10.6	10.6	10.9	10.7	11.0	10.9	11.0	10.4	10.5	9.9
Short-term	611.7	35.7	757.5	741.1	16.5	786.7	693.6	693.4	0.2	825.1	792.9	759.1	33.8	14.9	17.5	14.9	10.3	16.8	27.5	17.1	23.7	25.0	28.4	34.5	32.1
Long-term	4,039.3	34.6	85.7	63.7	22.0	4,264.9	67.0	77.6	-10.6	4,278.0	94.9	79.3	15.6	8.4	9.7	10.0	10.6	10.1	8.2	10.1	9.0	8.8	7.7	7.1	6.5
of which																									
Fixed rate	2,161.1	21.7	43.3	32.7	10.6	2,272.4	31.1	38.1	-7.0	2,277.9	48.2	42.7	5.5	4.7	7.1	6.3	7.5	8.0	6.7	8.2	6.8	6.9	6.5	6.7	5.9
Variable rate	1,524.3	10.8	30.9	22.5	8.5	1,614.3	25.3	21.8	3.5	1,618.4	32.2	27.3	4.9	11.9	11.1	12.2	12.1	11.1	9.0	11.1	10.6	9.9	8.3	7.1	6.7
Non-MFI corporations	1,816.3	7.3	167.7	135.4	32.3	2,171.4	179.2	118.0	61.3	2,174.1	114.9	111.1	3.8	16.7	20.3	18.7	20.4	21.4	20.5	21.8	20.4	20.6	19.9	21.8	21.5
of which																									
Financial corporations other than MFIs	1,179.6	7.3	43.6	16.8	26.7	1,485.0	87.9	21.7	66.2	1,476.9	7.2	14.5	-7.2	26.4	28.1	27.6	29.3	28.6	27.2	28.9	27.3	27.3	26.1	28.8	27.4
Short-term	11.8	-0.5	4.6	4.1	0.5	18.3	5.2	2.7	2.5	17.5	2.5	3.3	-0.7	31.4	26.3	64.8	30.9	-6.5	29.8	-8.2	-21.1	38.4	37.1	48.4	48.0
Long-term	1,167.8	7.8	39.0	12.7	26.3	1,466.7	82.7	19.0	63.7	1,459.4	4.7	11.2	-6.5	26.4	28.2	27.3	29.3	29.0	27.1	29.3	27.9	27.2	25.9	28.6	27.2
of which																									
Fixed rate	547.4	2.8	9.3	4.5	4.8	589.2	7.9	5.2	2.7	586.7	2.0	4.3	-2.2	13.9	17.8	20.7	19.9	17.6	13.5	18.3	16.7	13.9	12.6	11.5	10.5
Variable rate	608.4	3.7	29.0	8.1	20.9	858.9	73.6	13.6	60.0	853.6	2.1	6.8	-4.8	41.2	37.5	33.5	37.9	39.2	39.0	39.1	37.7	39.2	37.3	43.0	41.4
Non-financial corporations	636.7	0.0	124.1	118.5	5.6	686.4	91.4	96.3	-5.0	697.2	107.7	96.6	11.1	3.7	7.4	4.9	6.3	9.4	8.8	9.8	8.5	8.9	8.8	8.8	10.6
Short-term	96.3	2.1	116.5	113.6	2.9	121.6	85.6	90.8	-5.2	131.4	104.3	94.5	9.8	-4.9	16.3	3.4	13.6	23.2	24.6	24.6	21.3	25.4	23.5	29.1	36.5
Long-term	540.4	-2.1	7.6	5.0	2.7	564.9	5.8	5.5	0.3	565.8	3.4	2.1	1.3	5.4	5.7	5.2	4.9	6.8	5.9	7.1	6.2	5.8	6.0	5.3	5.9
of which																									
Fixed rate	413.3	-0.5	4.8	3.0	1.7	428.0	2.9	4.5	-1.7	427.6	2.3	1.7	0.5	0.8	3.8	2.7	2.7	4.7	5.0	5.1	4.2	5.1	5.3	4.8	5.1
Variable rate	113.9	-1.5	2.7	1.6	1.1	125.9	2.9	0.7	2.2	127.2	1.1	0.4	0.7	28.0	18.3	21.9	18.9	19.6	13.4	19.3	18.9	13.1	13.0	9.6	11.8
General government	4,762.7	39.7	130.4	121.4	9.0	4,844.7	57.2	126.9	-69.7	4,860.8	192.8	176.5	16.3	3.1	3.0	2.4	3.2	3.3	3.0	3.0	3.3	3.1	2.8	2.8	2.3
of which																									
Central government	4,456.8	38.5	123.3	115.1	8.2	4,529.5	52.2	120.0	-67.8	4,546.1	180.7	164.0	16.7	2.6	2.8	2.1	3.0	3.3	2.9	3.1	3.2	3.0	2.7	2.7	2.2
Short-term	347.0	17.2	71.3	68.5	2.9	356.8	38.6	89.6	-50.9	380.4	101.0	77.4	23.5	-4.1	5.2	-5.8	5.4	9.6	11.7	10.9	11.5	13.8	11.1	8.5	10.0
Long-term	4,109.7	21.2	52.0	46.6	5.3	4,172.7	13.6	30.5	-16.9	4,165.7	79.7	86.6	-6.9	3.3	2.6	2.8	2.8	2.7	2.1	2.4	2.4	2.0	1.9	2.3	1.6
of which																									
Fixed rate	3,748.1	17.9	44.8	42.7	2.1	3,786.5	13.3	25.9	-12.6	3,765.5	65.3	86.2	-20.9	3.2	2.4	3.0	2.7	2.3	1.8	1.9	2.5	1.7	1.7	1.7	0.7
Variable rate	309.8	-2.5	4.6	1.6	3.0	338.3	0.2	4.5	-4.3	345.8	7.6	0.1	7.5	5.0	3.8	1.0	5.1	4.4	4.8	3.0	1.3	4.9	4.6	8.3	11.6
Other general government	306.0	1.2	7.1	6.3	0.8	315.2	4.9	6.8	-1.9	314.7	12.1	12.5	-0.4	11.0	5.0	6.8	5.7	3.0	4.6	2.6	4.3	5.6	4.3	3.6	3.0
Short-term	4.3	0.5	3.4	3.2	0.2	6.6	2.7	3.7	-1.0	7.1	5.1	4.7	0.4	-11.9	16.4	-8.7	-0.8	5.9	78.0	-2.3	54.1	76.3	95.1	73.9	64.4
Long-term	301.6	0.7	3.7	3.2	0.5	308.5	2.2	3.1	-0.9	307.7	7.0	7.8	-0.8	11.5	4.8	7.1	5.9	2.9	3.6	2.7	3.5	4.6	3.1	2.7	2.2
of which																									
Fixed rate	238.0	1.3	3.0	2.2	0.8	250.1	0.8	2.5	-1.7	247.1	3.9	6.9	-3.0	13.4	6.6	7.7	7.5	5.0	6.3	4.7	5.6	6.8	6.4	5.8	3.9
Variable rate	63.3	-0.6	0.7	0.9	-0.2	58.2	1.3	0.6	0.7	60.3	3.0	0.9	2.1	4.5	-1.8	4.6	-0.3	-4.7	-6.5	-5.0	-4.3	-3.4	-9.3	-8.8	-4.6

Source: ECB securities issues statistics.

1) Data coverage for euro area residents is estimated to be around 95% of total issuance.

2) Corresponding ESA 95 sector codes: MFIs (including Eurosystem) comprises the ECB and the national central banks of the euro area (S.121) and other monetary financial institutions (S.122); financial corporations other than MFIs comprises other financial intermediaries (S.123), financial auxiliaries (S.124) and insurance corporations and pension funds (S.125); non-financial corporations (S.11); central government (S.131); other general government comprises state government (S.1312), local government (S.1313) and social security funds (S.1314).

3) The residual difference between total long-term debt securities and fixed and variable rate long-term debt securities consists of zero coupon bonds and revaluation effects.

4) Monthly averages of the transactions during this period.

5) Annual growth rates are based on financial transactions that occur when an institutional unit incurs or redeems liabilities. The annual growth rates therefore exclude the impact of reclassifications, revaluations, exchange rate variations and any other changes which do not arise from transactions.

Table 3
Debt securities issued by euro area residents in all currencies,¹⁾ by issuing sector²⁾ and maturity, seasonally adjusted
(EUR billions; nominal values)

	Amounts outstanding	Net issues					Three-month annualised growth rates of outstanding amounts ³⁾												
		Jan. 2007	Oct. 2007	Nov. 2007	Dec. 2007	Jan. 2008	2007 Feb.	2007 Mar.	2007 Apr.	2007 May	2007 June	2007 July	2007 Aug.	2007 Sep.	2007 Oct.	2007 Nov.	2007 Dec.	2008 Jan.	
Total	12,200.0	75.6	129.0	45.7	105.7	21.5	8.3	10.4	9.8	11.3	9.1	9.0	7.0	7.1	9.5	8.1	9.8	5.9	
Short-term	1,374.9	7.2	50.0	12.0	25.9	8.4	4.6	19.7	20.8	27.7	17.0	18.8	19.5	36.8	51.6	41.0	30.7	14.7	
Long-term	10,825.1	68.5	78.9	33.7	79.7	13.1	8.7	9.4	8.7	9.7	8.3	8.0	5.6	4.2	5.4	4.7	7.4	4.8	
MFIs	5,130.0	46.2	62.2	19.2	53.5	16.9	11.9	11.1	10.3	11.0	10.0	9.1	8.6	10.3	13.2	10.2	11.3	7.3	
Short-term	822.1	8.5	31.6	13.7	36.9	-1.6	8.1	10.9	7.8	19.6	11.6	17.2	25.2	72.9	89.3	68.1	52.8	28.0	
Long-term	4,307.8	37.7	30.6	5.4	16.6	18.5	12.5	11.1	10.6	9.8	9.7	7.9	6.2	2.7	4.0	2.5	5.0	3.8	
Non-MFI corporations of which	2,182.5	25.5	55.8	19.6	46.7	26.4	19.0	30.6	26.4	25.8	16.7	23.1	17.9	14.3	17.9	16.9	26.1	18.9	
Financial corporations other than MFIs	1,478.2	26.0	49.9	14.6	41.4	16.8	28.1	45.5	35.6	33.2	15.9	24.5	21.2	21.1	27.7	21.8	34.9	22.3	
Short-term	17.8	0.0	7.1	-0.1	1.8	0.0	-2.7	-0.4	-22.5	1.1	-27.7	-37.2	-43.9	-56.7	563.9	547.1	1,434.8	48.3	
Long-term	1,460.4	26.1	42.8	14.7	39.6	16.8	28.5	46.1	36.3	33.5	16.3	25.2	21.9	22.0	25.7	20.0	31.9	22.1	
Non-financial corporations	704.3	-0.6	5.9	5.0	5.3	9.6	3.9	6.7	10.7	12.6	18.5	20.4	11.6	2.2	0.6	7.5	9.9	12.1	
Short-term	136.4	-3.0	6.5	1.3	5.6	3.6	-5.6	12.6	43.1	51.6	55.5	75.1	20.8	4.0	1.1	33.9	53.3	38.0	
Long-term	567.9	2.4	-0.6	3.7	-0.3	6.0	5.8	5.7	5.4	6.2	12.1	11.3	9.7	1.8	0.5	2.5	2.0	6.9	
General government of which	4,887.5	4.0	11.0	6.9	5.5	-21.7	1.1	2.7	3.5	6.4	5.4	3.8	1.2	1.2	2.6	2.5	1.9	-0.8	
Central government	4,573.0	3.4	6.3	8.3	5.9	-20.6	1.1	2.7	3.4	6.5	5.9	4.2	1.2	0.7	1.8	2.0	1.8	-0.6	
Short-term	391.5	1.3	4.0	-3.0	-17.5	6.3	2.1	38.5	40.5	36.3	17.7	10.6	13.0	1.2	8.9	-3.0	-15.5	-13.4	
Long-term	4,181.6	2.1	2.3	11.4	23.4	-26.9	1.0	-0.1	0.6	4.1	4.8	3.7	0.1	0.7	1.2	2.5	3.6	0.8	
Other general government	314.4	0.6	4.7	-1.4	-0.4	-1.1	1.8	3.5	4.9	4.8	-1.1	-3.3	1.4	8.4	15.1	9.4	3.7	-3.6	
Short-term	7.1	0.4	0.8	0.1	-0.9	0.2	36.8	62.3	54.5	54.9	39.4	-16.6	-2.4	301.5	665.8	600.0	3.4	-26.0	
Long-term	307.3	0.2	3.9	-1.5	0.5	-1.3	1.4	2.8	4.3	4.1	-1.7	-3.1	1.5	5.7	10.9	5.4	3.7	-3.0	

Source: ECB securities issues statistics.

1) Data coverage for euro area residents is estimated to be around 95% of total issuance.

2) Corresponding ESA 95 sector codes: MFIs (including Eurosystem) comprises the ECB and the national central banks of the euro area (S.121) and other monetary financial institutions (S.122); financial corporations other than MFIs comprises other financial intermediaries (S.123), financial auxiliaries (S.124) and insurance corporations and pension funds (S.125); non-financial corporations (S.11); central government (S.1311); other general government comprises state government (S.1312), local government (S.1313) and social security funds (S.1314).

3) Three-month annualised growth rates are based on financial transactions that occur when an institutional unit incurs or redeems liabilities. The three-month annualised growth rates therefore exclude the impact of reclassifications, revaluations, exchange rate variations and any other changes which do not arise from transactions. The rates are annualised to allow direct comparisons with annual rates (please note that the non-adjusted rates presented in Table 2 are almost identical to seasonally adjusted annual rates).

Table 4
Quoted shares issued by euro area residents, by issuing sector ¹⁾
(EUR billions; market values)

	Amounts out-standing	Net issues	Gross issues	Redemptions	Net issues	Amounts out-standing	Gross issues	Redemptions	Net issues	Annual percentage change in market capitalisation ³⁾	Amounts out-standing	Gross issues	Redemptions	Net issues	Annual percentage change in market capitalisation ³⁾	Annual growth rates of outstanding amounts ⁴⁾											
	Jan. 2007		Feb. 2007 - Jan. 2008 ²⁾			Dec. 2007					Jan. 2008					2006	2007	2007 Q1	2007 Q2	2007 Q3	2007 Q4	2007 Aug.	2007 Sep.	2007 Oct.	2007 Nov.	2007 Dec.	2008 Jan.
	Total	6,364.1	5.0	11.3	3.0	8.3	6,571.3	13.5	4.6	8.8	6.3	5,749.8	3.8	1.4	2.4	-9.7	1.1	1.4	1.1	1.3	1.5	1.6	1.4	1.5	1.7	1.6	1.5
MFIs	1,123.5	3.8	1.3	0.3	1.0	1,017.2	0.9	0.0	0.9	-4.4	887.9	0.1	0.0	0.1	-21.0	1.7	2.0	2.5	2.2	1.8	1.6	1.6	2.2	1.7	1.4	1.5	1.1
Non-MFI corporations of which	5,240.6	1.2	10.0	2.7	7.3	5,554.2	12.5	4.6	7.9	8.5	4,861.9	3.6	1.4	2.3	-7.2	1.0	1.2	0.8	1.1	1.4	1.6	1.4	1.3	1.6	1.7	1.5	1.6
Financial corporations other than MFIs	646.2	0.4	2.1	0.6	1.5	579.0	0.5	2.2	-1.6	-8.6	497.3	0.3	0.7	-0.4	-23.0	2.1	1.8	1.0	1.5	1.4	3.0	1.4	1.2	3.5	3.4	3.0	2.9
Non-financial corporations	4,594.4	0.7	7.9	2.1	5.8	4,975.2	12.0	2.5	9.5	10.9	4,364.6	3.4	0.7	2.7	-5.0	0.9	1.2	0.8	1.0	1.4	1.4	1.4	1.3	1.4	1.4	1.4	1.4

Source: ECB securities issues statistics.

1) Corresponding ESA 95 sector codes: MFIs refers to other monetary financial institutions (S.122); financial corporations other than MFIs comprises other financial intermediaries (S.123), financial auxiliaries (S.124) and insurance corporations and pension funds (S.125); non-financial corporations (S.11).

2) Monthly averages of the transactions during this period.

3) Percentage change between the amount outstanding at the end of the month and the amount outstanding 12 months earlier.

4) Annual growth rates are based on transactions that occur during the period and therefore exclude reclassifications and any other changes which do not arise from transactions.