

EUROPEAN CENTRAL BANK  
**WORKING PAPER SERIES**



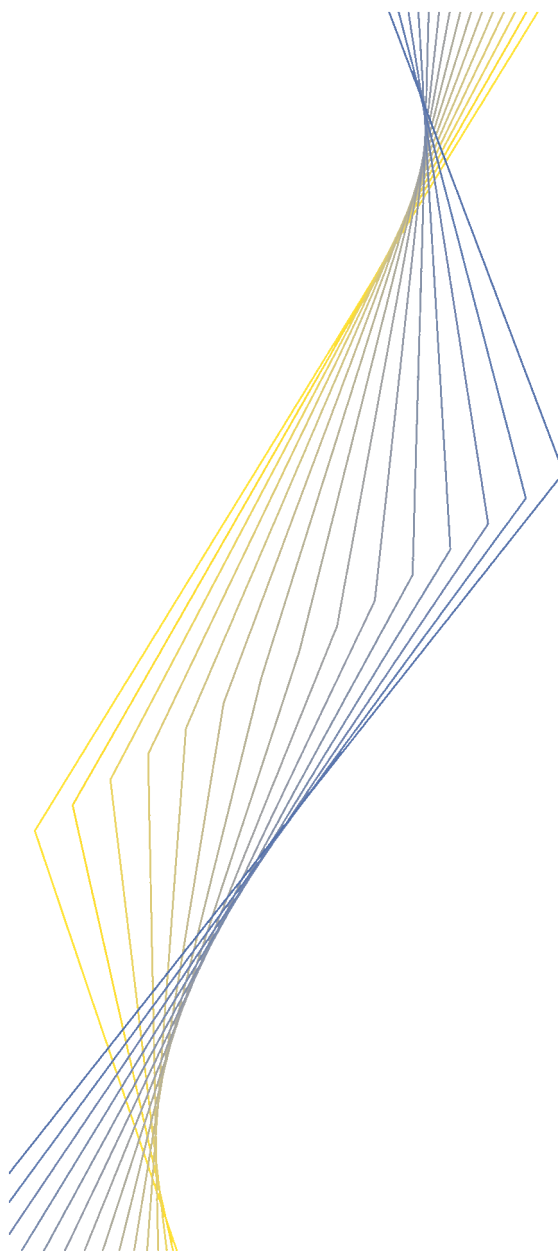
**WORKING PAPER NO. 200**

**INTERDEPENDENCE BETWEEN  
THE EURO AREA AND THE US:  
WHAT ROLE FOR EMU?**

**BY MICHAEL EHRMANN  
AND MARCEL FRATZSCHER**

**December 2002**

EUROPEAN CENTRAL BANK  
WORKING PAPER SERIES



**WORKING PAPER NO. 200**

**INTERDEPENDENCE BETWEEN  
THE EURO AREA AND THE US:  
WHAT ROLE FOR EMU?¹**

**BY MICHAEL EHRMANN²  
AND MARCEL FRATZSCHER²**

**December 2002**

*1 This paper presents the authors' personal opinions and does not necessarily reflect the views of the European Central Bank. We would like to thank Anna Maria Agresti, Sandrine Corvoisier, Jose Moreno and Jean Rodriguez for their assistance, as well as Francis Diebold, Simone Manganelli, an anonymous referee and seminar participants at the ECB for comments and discussions. We are grateful to Flemming Würtz, Reuters and S&P for providing some of the data series. The opinions expressed herein are those of the authors and do not necessarily represent those of the European Central Bank. This paper can be downloaded without charge from <http://www.ecb.int> or from the Social Science Research Network electronic library at: [http://papers.ssrn.com/abstract\\_id=xxxxxx](http://papers.ssrn.com/abstract_id=xxxxxx)*

*2 European Central Bank, email: [Michael.Ehrmann@ecb.int](mailto:Michael.Ehrmann@ecb.int), [Marcel.Fratzscher@ecb.int](mailto:Marcel.Fratzscher@ecb.int)*

© European Central Bank, 2002

|                       |  |
|-----------------------|--|
| <b>Address</b>        | <b>Kaiserstrasse 29<br/>D-60311 Frankfurt am Main<br/>Germany</b>  |
| <b>Postal address</b> | <b>Postfach 16 03 19<br/>D-60066 Frankfurt am Main<br/>Germany</b> |
| <b>Telephone</b>      | <b>+49 69 1344 0</b>   |
| <b>Internet</b>       | <b><a href="http://www.ecb.int">http://www.ecb.int</a></b>         |
| <b>Fax</b>            | <b>+49 69 1344 6000</b>  |
| <b>Telex</b>          | <b>411 144 ecb d</b>   |

*All rights reserved.*

*Reproduction for educational and non-commercial purposes is permitted provided that the source is acknowledged.*

*The views expressed in this paper do not necessarily reflect those of the European Central Bank.*

ISSN 1561-0810

# Contents

|  |    |
|--|----|
| Abstract                                       | 4  |
| Non-technical summary                          | 5  |
| 1. Introduction                                | 7  |
| 2. Some conceptual issues of news effects      | 8  |
| 2.1 Econometric identification of news effects | 8  |
| 2.2 Determinants of news effects               | 9  |
| 2.3 News effects and the yield curve           | 10 |
| 2.4 News effects and interdependence           | 11 |
| 2.5 News effects on market volatility          | 12 |
| 3. The data                                    | 12 |
| 3.1 Announcements and surprises                | 12 |
| 3.2 Interest rate data                         | 14 |
| 4. The econometric approach                    | 15 |
| 4.1 EGARCH modelling                           | 16 |
| 4.2 Weighted Least Square (WLS) modelling      | 17 |
| 5. The effects of monetary policy surprises    | 19 |
| 6. The effects of macroeconomic announcements  | 21 |
| 6.1 Pre EMU                                    | 21 |
| 6.2 Changes over time                          | 22 |
| 6.3 EMU  | 23 |
| 7. Nonlinearities                              | 25 |
| 8. Conclusions                                 | 27 |
| References                                     | 29 |
| Appendix: tables & figures                     | 31 |
| European Central Bank working paper series     | 48 |

## **Abstract**

This paper investigates whether the degree and nature of interdependence between the United States and the euro area have changed with the advent of EMU. Using real-time data, it addresses this issue from the perspective of financial markets by analysing the effects of monetary policy announcements and macroeconomic news on daily interest rates in the United States and the euro area. The paper finds that the interdependence of money markets has steadily increased over time, with the spillover effects from the United States to the euro area being somewhat stronger than in the opposite direction. Moreover, for the early stages of EMU, we find evidence that the markets were going through a learning process about the ECB monetary policy. Towards the end of our sample period, the importance attached to euro area consumer prices and M3 has reached levels that are remarkably similar to the role of German consumer prices and M3 for German interest rates prior to EMU.

JEL classification: E43, E52, F42

Keywords: interdependence; announcements; news; money markets; real-time data; United States; euro area.

### **Non-technical summary**

News releases for the US economy are generally monitored closely also in European financial markets, and vice versa, reflecting economic and financial interdependence between the US and European economies. This paper models the degree of interdependence by focusing on the reaction of daily money market interest rates to macroeconomic news and monetary policy announcements in the US and the euro area, explicitly allowing for spillover effects across countries.

The analysis is conducted for two subperiods, 1993-1998 and 1999-2002. For the first subperiod, we analyse German and US data, and for the second subsample, we use data on the euro area and the US. This allows us to test whether EMU has changed the degree and nature of this interdependence. The euro area is larger and more closed than the economies of the single member countries. This could have two effects on the importance market participants attach to news. It could imply that the euro area markets are now focusing less on US developments and more on domestic news. Moreover, it may imply that the US markets now react more strongly to developments in the euro area than they did to news about individual member countries.

This paper analyses furthermore the way financial markets perceive central bank behaviour. If interest rates react to news, then this is most likely a reflection of the market's expectation about the future course of monetary policy. In this respect, the analysis of EMU is interesting in several dimensions. First, it is possible to see whether there has been a learning process in the markets about the monetary policy strategy of the European Central Bank (ECB). The creation of EMU brought about a structural change in the monetary policy regime, such that the markets could not rely on a track record and their experience, but had to learn about the way the ECB sets monetary policy. Second, this need to learn may have implied that the initial period of EMU was one of increased market uncertainty. It is interesting to see whether markets behave differently in such periods. Third, such an analysis can answer whether the ECB was or is perceived to behave like the German Bundesbank prior to EMU.

The empirical results of the paper suggest that the linkages of the euro area and US money markets have steadily increased over time. Beyond this general effect, there are times when European markets react to news about the US economy. For the early stages

of EMU, we find evidence that the markets were going through a learning process about the ECB monetary policy. Towards the end of our sample period, the importance attached to euro area consumer prices and M3 has reached levels that are remarkably similar to the role of German consumer prices and M3 for German interest rates prior to EMU. Throughout this learning process, the attention devoted to US announcements has decreased. Finally, we find evidence for nonlinearities of announcement and spillover effects. The reaction of interest rates and their volatility tends to be stronger when markets have difficulties in gaining a clear view of the future course of monetary policy.

## **1. Introduction**

The release of economic news, i.e. of real-time data regarding the US economy is monitored closely also in European financial markets, and vice versa. These spillovers of news effects reflect economic and financial interdependence between the US and European economies. The aim of this paper is to investigate the degree of interdependence by focusing on the daily reaction of money market interest rates to macroeconomic news and monetary policy announcements in the US and the euro area, explicitly allowing for spillover effects across countries.

By comparing the interdependence between the US and Germany prior to EMU with the situation between the US and the euro area since 1999, this paper tests whether EMU has changed the degree and nature of this interdependence. With the advent of European Monetary Union (EMU), a new currency area has been created that is much larger and more closed than the economies of the single member countries. As a matter of fact, the euro area is similar to the US in both size and degree of openness. This could have two effects on the importance attached to news by market participants. On the one hand, it could imply that the euro area markets are now focusing less on US developments. On the other hand, it could also mean that the US markets do now react more strongly to developments in the euro area than they did to news about individual member countries.

The analysis of money market interest rates allows us to furthermore analyse the perception of monetary policy by financial markets. If interest rates react to news, then this is most likely a reflection of the market's expectation about the future course of monetary policy (Kearney, 2002). In this respect, the analysis of EMU is interesting in several dimensions. First, it is possible to evaluate whether there has been a learning process in the markets about the monetary policy strategy of the European Central Bank (ECB). The creation of EMU brought about a structural change in the monetary policy regime, such that the markets could not rely on a track record and their experience, but had to learn about the way the ECB would set monetary policy. Second, this need to learn may have implied that the initial period of EMU was one of increased market uncertainty. It is interesting to see whether markets behave differently in such periods. Third, such an analysis can answer whether the ECB was or is perceived to behave like the German Bundesbank prior to EMU. The empirical results of the paper suggest that the linkages of money markets have steadily increased over time. Beyond this general effect, there are times when European markets react to news about the US economy. For the early stages of EMU, we find evidence that



the markets were going through a learning process about the ECB monetary policy. Towards the end of our sample period, the importance attached to euro area consumer prices and M3 has reached levels that are remarkably similar to the role of German consumer prices and M3 for German interest rates prior to EMU. Throughout this learning process, the attention devoted to US announcements has decreased. Finally, we find evidence for nonlinearities of announcement and spillover effects. The reaction of interest rates and their volatility tends to be stronger when markets have difficulties in gaining a clear view of the future course of monetary policy.

In the remainder of this paper, we provide a background discussion on the effects of news releases on interest rates in section 2. Sections 3 and 4 describe the data and the econometric models underlying our analysis. The results are reported in sections 5 to 7, with a focus on the effects of monetary policy announcements in section 5. Section 6 extends the analysis to macroeconomic announcements in general. In the subsequent section 7, we test for nonlinearities in the announcement effects. Section 8 concludes.

## **2. Some conceptual issues of news effects**

To what extent monetary policy and macroeconomic news affect asset prices depends on a number of factors. To prepare the ground for the empirical analysis, this section provides a discussion of some of the key conceptual issues underlying the effects of news. For the purpose of this paper, we focus on five issues: the econometric identification of news effects, their economic determinants, the impact on the yield curve, spillovers, and the difference between mean and volatility effects.

### **2.1 Econometric identification of news effects**

If economic fundamentals affect the market's view of the appropriate level of interest rates, the arrival of new information about those fundamentals is likely to lead to responses in market interest rates. In order to gauge the extent to which the underlying fundamentals affect markets, it is therefore crucial to properly model the arrival of new information. Releases of macroeconomic data, or the announcement of monetary policy decisions, are partly expected by the market. This expected part of the announcement is thus already priced into the market prior to the release. At the point of the announcement, the market reacts merely to the *surprise component* contained in the news, i.e., to the deviation of the announced figures from their expected value. Analysing the reaction of markets to surprises

in data releases is therefore a proxy to assess the importance of the underlying macroeconomic variable for the market.

Kuttner (2001), for instance, finds that Federal Reserve decisions on the Fed funds target rate only affect market interest rates if these decisions are unexpected, while expected announcements have little or no effect on markets nowadays. Similar results are obtained by Roley and Sellon (1998) and Lange, Sack and Whitesell (2001), who furthermore show that markets have improved in their ability to anticipate US monetary policy decisions in the 1990s due to improved transparency and institutional changes. In this paper, we follow this strategy and investigate the surprise component of announcements.

## 2.2 Determinants of news effects

Which announcements are relevant for the market? First, market participants may give more importance to those announcement types that they believe will have the greatest impact on the behaviour of central banks. Kearney (2002) shows for the US that the market response to employment announcements reflects the expectations of the Fed's probable response.<sup>1</sup>

Second, the literature on herd behaviour and informational cascades (e.g. Banerjee 1992, Bikchandani et al. 1992) emphasises that what drives financial market outcomes is not so much the occurrence of news *per se*, but how this new information is processed and interpreted by market participants. The same news can have a vastly different effect on markets depending on the conditions of markets and market participants. It has been shown for bond markets (Fleming and Remolona, 1997) and for foreign exchange markets (Galati and Ho, 2001) that an announcement surprise is likely to have a larger effect under conditions of market uncertainty. Individual announcements tend to have a larger news content in such an environment than under conditions where there is a broad consensus about the course of monetary policy.

Similarly, the effect of announcements may depend on the position within the monetary policy cycle. Announcement surprises may have little effect on interest rates if the view about the course of monetary policy is unanimous. In other words, announcements tend to have the largest effect on money markets around turning points when there is no consensus yet among market participants about whether the next step will be a tightening or a

---

<sup>1</sup> For foreign exchange markets, Almeida et al. (1998) and Andersen and Bollerslev (1998) find that the variables that have the largest effect are news of inflation and monetary aggregates for Germany but mostly real sector variables for the US.

relaxation of the monetary policy stance. Demiralp and Jorda (2002) provide evidence that the market response to monetary policy decisions is markedly stronger when these decisions introduce a directional change in monetary policy, i.e. the first easing (tightening) after a sequence of tightenings (easings).

An important issue which, to our knowledge, has not been addressed in the literature yet is that markets may be most responsive to news if the released data is close to some declared or perceived (policy) target. An announcement surprise may have a significant effect on markets if this surprise changes the market's belief about the future course of monetary policy. Hence a surprise may have little impact on money markets if the announced value is far above or below a critical level, whereas it may have a larger relevance if the announcement is closer to this critical level. In this paper, we will test this hypothesis in the analysis of nonlinearities in section 7.

### **2.3 News effects and the yield curve**

A widely researched area is the effect of announcements, and in particular of monetary policy changes, on the yield curve. For *monetary policy decisions*, resulting changes at the long end of the yield curve can at least in part be attributed to the market's views on the central bank's credibility or its ability to control inflation. Hence, for instance, a tightening of monetary policy can be compatible with a reduction in long-term interest rates if markets perceive the tightening as a credible step by monetary authorities to reduce inflation in the long run (Thornton, 1998). The effect of a monetary policy decision on long rates can therefore be not only quantitatively different but also qualitatively different from that on shorter maturities.

By contrast, for *macro announcements* a number of papers argue that the effects of news surprises at the short and medium maturities mainly reveal information about market participants' beliefs of the central bank's reaction function (see e.g. Haldane and Read, 2000). Fleming and Remolona (1999) find a hump-shaped impact effect of macroeconomic announcements on the yield curve in the US, i.e. the largest impact occurs at intermediate maturities between one and five years. This can be taken as evidence that markets expect monetary policy to react to news in the medium run. Data releases should, at least in normal circumstances, not lead to immediate monetary policy reactions. However, in the medium run, as more new information accumulates, monetary policy is likely to react, which implies that market interest rates at these maturities are affected.

Becker, Finnerty and Kopecky (1995) find that spillover effects of macro announcements for the US, UK, Japan and Germany have a smaller effect on the long end than at the short end of the yield curve. They interpret these results as being indicative of the presence of common international shocks to these countries.

## **2.4 News effects and interdependence**

One important issue that has been given little attention in the literature so far is the relevance of news spillovers across markets. In principle, there are three channels through which foreign announcements may affect domestic markets. First, foreign news may be relevant for domestic monetary policy authorities if these target “external” variables, such as the exchange rate. A tightening of monetary policy in the target country, for instance, may force domestic authorities to adjust their own monetary policy stance in order to maintain the exchange rate target. Hence, foreign announcements may be relevant for domestic monetary policy decisions via this direct channel of targeting of external variables.

Secondly, the integration of global financial markets might lead to spillover effects. A change in monetary policy in the United States, for instance, will affect other money markets in other countries via capital flows and the elimination of arbitrage possibilities.

A third channel works through real integration, and implies that foreign announcements may reveal relevant information about domestic macroeconomic conditions. For instance, macroeconomic news in the US are relevant for the euro area if they provide information about the economic outlook of the euro area and thereby information about the likely stance of domestic monetary policy, and vice versa.

For interdependence in money markets, Gravelle and Moessner (2001) find that Canadian interest rates are strongly influenced by US macroeconomic news but only much less by Canadian news. They interpret these findings as reflecting the close integration between Canada and the US, but also revealing some market uncertainty about the reaction function of Canadian monetary policy. Kim and Sheen (2000) show similar results for Australian interest rates, which are found to be strongly affected by US news, in particular at the short end of the yield curve.

## **2.5 News effects on market volatility**

The main focus in the announcement literature has been on the effects of news on the conditional mean of asset prices. But announcements may also have a significant effect on the conditional volatility of asset prices, both before and after announcements. The volatility effects of announcements depend on the heterogeneity of beliefs and expectations of market participants. Heterogeneity of expectations about an upcoming announcement may raise trading and uncertainty in markets, thereby increasing volatility prior to the announcement, whereas unanimity of expectations may have the opposite effect. Similarly, market participants may give different interpretations to particular announcements, thus raising volatility, while markets may settle immediately after other types of announcements.

Most of the analysis of volatility effects in the literature has focused on foreign exchange markets. The evidence for these markets mostly shows a higher degree of market volatility both before (Madura and Tucker, 1992) and after announcements (Ederington and Lee, 1995; Bonser-Neal and Tanner, 1996). A similar result is found for US bond markets (Fleming and Remolona, 1997). The explicit modelling of the conditional second moments in EGARCH and WLS frameworks allows us to test the volatility hypothesis also for money markets.

## **3. The data**

### **3.1 Announcements and surprises**

We look at monetary policy announcements as well as macroeconomic announcements for the US, Germany and the euro area during the period January 1993 (January 1999 for the euro area) to February 2002. Monetary policy announcements include announcements on days of scheduled and unscheduled meetings of the decision-making bodies of the three central banks. An important difference across the central banks is the frequency of meetings: FOMC meetings take place usually every six weeks, or 10 times per year. By contrast, the Zentralbankrat of the Bundesbank and the Governing Council of the ECB have been meeting mostly every two weeks, although the ECB announced on 8 November 2001, that it would normally take interest rate decisions only at its first meeting of each month. This difference in frequency of meetings means that there is a much larger number of monetary policy announcements for the Bundesbank and the ECB than for the Federal Reserve, although the Fed changed its policy rate somewhat more frequently during the

1993-2002 period than the Bundesbank and the ECB: 31 changes for the Fed, as compared to 13 for the Bundesbank, and 12 for the ECB (see Table 1).

Tables 1 to 3 around here

As to the macroeconomic announcements, we look at a set of 10 macroeconomic variables for each country which have been identified in the literature as the most relevant. The source for the data is Money Market Services (MMS) International. Table 4 lists the variables, the time period over which the data is available, the usual release time during the announcement day, as well as the lag with which the data becomes publicly available. Figure 1 show the release dates of the macro announcement for month T and reveal that, in general, macroeconomic data become available much more quickly in the US than in Germany or the euro area. Almost all the US announcements are released within the subsequent month, whereas most euro area and German announcements occur with a two-month lag.

Figure 1 and Tables 4 to 7 around here

The expectations data for monetary policy decisions originates from a Reuters poll of 25 to 30 market participants before each meeting of the central bank decision making bodies. We use the mean of the survey as our expectations measure although using the median yields similar econometric results.<sup>2</sup>

Employing standard techniques in the literature (e.g. Gravelle and Moessner, 2001), we test for unbiasedness and efficiency of the survey data. We find that the survey expectations are of good quality as they prove to be unbiased and efficient. Tables 2 and 3 show the results for the respective tests for the forecasts of monetary policy announcements. The results show that the expectations are unbiased and efficient for the Fed, Bundesbank and ECB.

The expectations data allow us to investigate the predictability of the monetary policy decisions. We define a forecast to be correct, or a monetary policy decision to be anticipated by the market, if the expectations lie within an interval of 12.5 basis points above or below the announced decision. Obviously, the markets anticipate the

---

<sup>2</sup> An alternative to this survey data is the use of market instruments, in particular the Fed funds futures rate for the US (Kuttner 2001). One reason for our decision to nevertheless choose the survey data was the

overwhelming majority of interest rate decisions – since in most cases, the decision to leave interest rates unchanged was easily anticipated (see first panel of table 1). Looking only at the events when the central banks decided to change their policy interest rates (second panel of table 1), it turns out that the ECB does approximately as well as the Fed: for the ECB, 9 out of 12 changes have been anticipated correctly; for the Fed, this has been the case for 24 of the 31 changes.

The expectations data for the macro announcements comes from MMS and is based on survey data of market participants. MMS collects the forecasts of about 40 money market managers every Friday for the announcements to be released during the subsequent week and reports the median of these forecasts. Unbiasedness and efficiency cannot be rejected at the 5% level for most of the macroeconomic announcement expectations, except for retail sales and the trade balance for Germany and retail sales and the unemployment rate for the US (Tables 6 and 7).<sup>3</sup>

Finally, we construct the surprise for each variable by deducting the expectation of the announcement ( $E_{k,t}$ ) from the actual announcement value of the variable ( $A_{k,t}$ ). Since the unit of measurement differs across variables, we will use in the econometric analysis below the standardised surprise ( $S_{k,t}$ ), which is obtained by dividing the surprise by the sample standard deviation  $\Omega_k$  of each announcement  $k$ :<sup>4</sup>

$$S_{k,t} = \frac{A_{k,t} - E_{k,t}}{\Omega_k}$$

### 3.2 Interest rate data

The market interest rates that we use are interbank rates for Germany and the euro area, and treasury bill rates for the US, all of which are available at maturities of 1, 3, 6 and 12 months. For Germany, we take the FIBOR, which is then continued by the EURIBOR for the euro area. The closing quotes for both are determined at 11:00 Central European Time (CET). For the US Treasury bill market, we use quotes that are determined at 17:30 Eastern Standard Time (EST). The time difference between EST and CET is usually 6 hours with

---

unavailability of a reliable market measure for monetary policy expectations for Germany. For a robustness test, see section 5.

<sup>3</sup> We decided to drop these two variables from our estimates. Furthermore, we dropped variables that turned out to be irrelevant in all our estimates.

<sup>4</sup> The expectations of monetary policy have not been standardised because the coefficients of the monetary policy surprises allow a meaningful interpretation without standardisation.

the exception of one week in late March/early April when the difference is 7 hours due to the later transition to daylight saving time in the US. One advantage of this timing is that there is no overlap in trading times. US announcements therefore affect European markets only on the subsequent business day. European announcements mostly affect European interbank rates on the same day. In some cases like the monetary policy announcements in Germany and for the ECB, however, announcements occur after 11:00 CET so that the effect on these rates materialises only on the following day (see Table 4). Figure 2 shows that the market interest rates follow the monetary policy rates closely, especially at the short maturities.

Figure 2 and Table 8 around here

As to the frequency of the analysis, we use a daily frequency rather than intra-day or tick-by-tick data. The drawback of such an analysis on a lower frequency is that other events and news during the day may introduce some noise, thereby possibly making the measurement of announcement spillovers less accurate. However, such noise occurs less frequently in money markets than in other financial markets. Moreover, an important reason for using data on a daily frequency is that the *official* release times of announcements during the day, as given in Table 4, are not always the same as the *actual* release times. There is in particular evidence for Germany that the announcements are frequently “leaked” some time before the official release time. This fact has been given as a potential reason by some studies for why there is much less evidence for effects of German announcements (e.g. Andersen et al., 2001). The advantage of using data with daily frequency is therefore that it allows us to avoid this measurement problem.

Table 8 shows the summary statistics for the interest rate series. It reveals strong evidence of negative skewness, excess kurtosis, non-normality and serial correlation. The econometric model therefore needs to take into account these specific data characteristics.

#### **4. The econometric approach**

We model the processes of interest rate changes in exponential GARCH (EGARCH) and weighted least square (WLS) frameworks. Both methodologies take into account the specific characteristics of the data described in the previous section. Moreover, a key



advantage of these methodologies is that they enable us to measure news and spillover effects both for the conditional means and the conditional variances.

#### 4.1 EGARCH modelling

As to the GARCH model, we employ a bivariate EGARCH model following Nelson (1991) in which the conditional mean equations for the changes in the market interest rates  $\Delta r_t$  for the US and Germany/euro area (EA) are expressed as a function of past interest rate changes in both areas, an announcement surprise of variable  $k$  ( $s_{k,t}$ ) as well as day-of-the-week effects (*Mon*, *Fri*):<sup>5</sup>

$$\Delta r_t^{EA} = \alpha_1 + \beta_1^{EA} \Delta r_{t-1}^{EA} + \beta_1^{US} \Delta r_{t-1}^{US} + \gamma_1 s_{k,t} + \delta_1^M \text{Mon} + \delta_1^F \text{Fri} + \varepsilon_{1,t} \quad (1)$$

$$\Delta r_t^{US} = \alpha_2 + \beta_2^{EA} \Delta r_t^{EA} + \beta_2^{US} \Delta r_{t-1}^{US} + \gamma_2 s_{k,t} + \delta_2^M \text{Mon} + \delta_2^F \text{Fri} + \varepsilon_{2,t} \quad (2)$$

where the announcement surprises ( $s_{k,t}$ ) can be either macroeconomic announcements or monetary policy announcements, and they can originate either in the own area or abroad.

As to the conditional variance equations, each of the two conditional second moments is formulated as a function of an announcement dummy of variable  $k$  ( $n_{k,t}$ ), which is unity for those days when an announcement is made and zero otherwise,<sup>6</sup> the day-of-the-week effects (*Mon*, *Fri*), as well as the past variance ( $h_{1,t-1}$ ) and innovations ( $\varepsilon_{1,t-1}$ ) in the euro area and past variance ( $h_{2,t-1}$ ) and innovations ( $\varepsilon_{2,t-1}$ ) in the US. Note that the variance ( $h_{1,t}$ ) and innovations ( $\varepsilon_{1,t}$ ) of the euro area enter the conditional variance equation of the US on the same business day because the interbank rates in Europe are determined before the US markets open. The EGARCH approach accounts for the skewness, kurtosis and the time-varying volatility of the interest rate data by formulating a non-normal density for the residuals of the interest rate processes in the following way:

<sup>5</sup> Day-of-the-week effects were also tested for other days, but only the coefficients for the Friday and Monday dummies were found to be significant in some specifications.

<sup>6</sup> The alternative specification of using absolute announcement surprises yielded quite similar results to that of using announcement dummies.

$$\begin{aligned}
\log(h_{1,t}) = & \omega_1 + \theta_{1,\varepsilon 1}^{EA} \left( \frac{\varepsilon_{1,t-1}}{\sqrt{h_{1,t-1}}} - \sqrt{\frac{2}{\pi}} \right) + \theta_{1,\varepsilon 2}^{EA} \left( \frac{\varepsilon_{1,t-1}}{\sqrt{h_{1,t-1}}} \right) + \theta_{1,h}^{EA} \log(h_{1,t-1}) \\
& + \theta_{1,\varepsilon 1}^{US} \left( \frac{\varepsilon_{2,t-1}}{\sqrt{h_{2,t-1}}} - \sqrt{\frac{2}{\pi}} \right) + \theta_{1,\varepsilon 2}^{US} \left( \frac{\varepsilon_{2,t-1}}{\sqrt{h_{2,t-1}}} \right) + \theta_{1,h}^{US} \log(h_{2,t-1}) \\
& + \kappa_1 n_{k,t} + \varphi_1^M Mon + \varphi_1^F Fri
\end{aligned} \tag{3}$$

$$\begin{aligned}
\log(h_{2,t}) = & \omega_1 + \theta_{2,\varepsilon 1}^{EA} \left( \frac{\varepsilon_{1,t}}{\sqrt{h_{1,t}}} - \sqrt{\frac{2}{\pi}} \right) + \theta_{2,\varepsilon 2}^{EA} \left( \frac{\varepsilon_{1,t}}{\sqrt{h_{1,t}}} \right) + \theta_{2,h}^{EA} \log(h_{1,t}) \\
& + \theta_{2,\varepsilon 1}^{US} \left( \frac{\varepsilon_{2,t-1}}{\sqrt{h_{2,t-1}}} - \sqrt{\frac{2}{\pi}} \right) + \theta_{2,\varepsilon 2}^{US} \left( \frac{\varepsilon_{2,t-1}}{\sqrt{h_{2,t-1}}} \right) + \theta_{2,h}^{US} \log(h_{2,t-1}) \\
& + \kappa_2 n_{k,t} + \varphi_2^M Mon + \varphi_2^F Fri
\end{aligned} \tag{4}$$

A further advantage of the EGARCH approach is that it does not require us to impose non-negativity constraints on the coefficients of the conditional second moments. Finally, the model is estimated via log likelihood estimation of the function

$$L(\theta) = -\left(\frac{T}{2}\right) \ln(2\pi) - \frac{1}{2} \sum_{t=1}^T (\ln|H_t| + \varepsilon_t' H_t^{-1} \varepsilon_t)$$

with  $H_t$  as the time-varying conditional variance-covariance matrix,  $T$  the number of observations, and  $\theta$  the vector of parameters of interest. The Simplex algorithm is used to get initial values and the BHHH algorithm to obtain the final parameter estimates.

## 4.2 Weighted Least Square (WLS) modelling

Subsequently, we extend the analysis to include the full set of macroeconomic announcements rather than only including a single announcement at a time as the EGARCH model of (1)-(4) had done. Estimation of these extended models in the EGARCH framework turned out to be not feasible, due to the large dimension of the parameter space. The maximum likelihood procedure proved unstable. For this reason, we adopt a different estimation methodology for the extended models. Following Andersen and Bollerslev (1998) and Andersen et al. (2002), we use a weighted least squares (WLS) approach. Analogously to the EGARCH model, we regress the first difference of the market interest

rates on its own lags, on the lagged change in market interest rates in the other country, as well as on the full set of surprises regarding the macroeconomic and monetary policy news. Furthermore, we allow for Monday and Friday effects like in the specification above.

$$\Delta r_t^{EA} = \alpha_1 + \sum_{l1=1}^{L1} \beta_{1,l1}^{EA} \Delta r_{t-l1}^{EA} + \beta_1^{US} \Delta r_{t-1}^{US} + \sum_{i=1}^I \gamma_{1i}^{EA} s_{i,t}^{EA} + \sum_{j=1}^J \gamma_{1,j}^{US} s_{j,t}^{US} + \delta_1^M Mon + \delta_1^F Fri + \varepsilon_{1,t} \quad (5)$$

$$\Delta r_t^{US} = \alpha_2 + \beta_2^{EA} \Delta r_t^{EA} + \sum_{l2=1}^{L2} \beta_{2,l2}^{US} \Delta r_{t-l2}^{US} + \sum_{i=1}^I \gamma_{2i}^{EA} s_{i,t}^{EA} + \sum_{j=1}^J \gamma_{2,j}^{US} s_{j,t}^{US} + \delta_2^M Mon + \delta_2^F Fri + \varepsilon_{2,t} \quad (6)$$

The disturbance terms in (5) and (6) will be heteroskedastic. To take account of this, we apply a three-step procedure: in the first step, we estimate equations (5) and (6) via ordinary least squares (OLS), and then in the second step estimate the time-varying volatility of  $\varepsilon_{1,t}$  and  $\varepsilon_{2,t}$  from the regression residuals,  $\hat{\varepsilon}_{1,t}$  and  $\hat{\varepsilon}_{2,t}$ . As the third step, the estimates of this volatility,  $\exp(\log[\hat{\varepsilon}_{1,t}^2] - \hat{\mu}_{1,t})$  and  $\exp(\log[\hat{\varepsilon}_{2,t}^2] - \hat{\mu}_{2,t})$ , are then used in the WLS estimation of (5) and (6). We iterate on these steps until convergence. The model for the volatility is formulated as

$$\begin{aligned} \log(\hat{\varepsilon}_{1,t}^2) = & \omega_1 + \sum_{l3=1}^{L3} \theta_{1,l3}^{EA} \log(\hat{\varepsilon}_{1,t-l3}^2) + \theta_1^{US} \log(\hat{\varepsilon}_{2,t-1}^2) \\ & + \sum_{i=1}^I \kappa_{1i}^{EA} n_{i,t}^{EA} + \sum_{j=1}^J \kappa_{1j}^{US} n_{j,t-1}^{US} + \varphi_1^M Mon + \varphi_1^F Fri + \mu_{1,t} \end{aligned} \quad (7)$$

$$\begin{aligned} \log(\hat{\varepsilon}_{2,t}^2) = & \omega_2 + \sum_{l4=1}^{L4} \theta_{2,l4}^{US} \log(\hat{\varepsilon}_{2,t-l4}^2) + \theta_2^{EA} \log(\hat{\varepsilon}_{1,t}^2) \\ & + \sum_{i=1}^I \kappa_{2i}^{EA} n_{i,t}^{EA} + \sum_{j=1}^J \kappa_{2j}^{US} n_{j,t}^{US} + \varphi_2^M Mon + \varphi_2^F Fri + \mu_{2,t} \end{aligned} \quad (8)$$

This specification needs to be somewhat more heavily parameterised than in the EGARCH framework, since we cannot model the volatility directly. Hence, more own lags are needed. All lag lengths ( $L1$  to  $L4$ ) are therefore chosen according to the Schwarz information criterion.

As explained in Andersen et al. (2002), it is possible to estimate (5) and (6) using heteroskedasticity and serial correlation consistent standard errors. However, this estimator is designed to be robust to residual heteroskedasticity of unknown form, and as such might

be inferior to estimating a well-specified parametric volatility model in small samples. Additionally, this approach yields estimates of equations (7) and (8), which are of interest themselves.<sup>7</sup>

## **5. The effects of monetary policy surprises**

The first step of the analysis consists of estimating the effects of monetary policy. We do so in the EGARCH framework of equations (1) to (4). As mentioned above, this framework needs parsimonious modelling, such that we include only the surprise component of monetary policy announcements in one country at a time. Table 9a reports the according results for the full sample, January 1993 - January 2002. In this case, we have stacked the ECB monetary policy surprises after those of the Bundesbank. The effects of German and euro area monetary policy surprises are listed in the left columns of this table, those for the US in the right columns.

Tables 9a-9d around here

The upper panel contains the coefficients of the mean equations (1) and (2), for varying interest rate maturities. A surprise regarding a monetary policy announcement implies that the policy rate is increased by more (or lowered by less) than the market had expected. Hence, such a surprise should lead to an increase in market interest rates. This is indeed the case: the coefficients of European surprises on European interest rates are positive and highly significant, as well as those of US surprises on US interest rates. There is some evidence of spillover effects in the low maturities: one month rates tend to react to surprises from across the Atlantic, and for the three month rates, we can still detect an effect of US surprises on European rates. The effects of surprises vary across maturities: in line with all other studies (see, e.g., Thornton, 1998), we find that the longer the maturity, the smaller the effect.

The second panel of table 9a shows the estimated coefficients of the variance equations, for varying maturities. For nearly all cases do we find significant effects on the volatility of money markets. In general, volatility increases after a monetary policy surprise. Interestingly, there is a large degree of transatlantic spillovers in both directions.

---

<sup>7</sup> The results are qualitatively robust when using OLS with heteroskedasticity and serial correlation consistent standard errors.

Tables 9b and 9c provide the results of split samples up to EMU and under EMU. The results for January 1993 – December 1998 are covered in table 9b, those for EMU, i.e. January 1999 – January 2002 in table 9c. The responses of interest rates to the European monetary policy surprises are generally lower in the first subsample than in the second. This could indicate that the survey based expectation measures have improved in quality over time. Nonetheless, the effects are significant for all maturities also in the first subsample, for both the US and Europe. The two subsamples differ mainly in two respects. On the one hand, spillover effects are somewhat more evident under EMU than before. For the mean equation, this is the case for US announcements which affect European rates in a more consistent fashion. For the variance equation, the US markets are relatively more affected by European announcements under EMU. On the other hand, the volatility effects of monetary policy are generally considerably smaller for the second subsample.

Regarding the effects of monetary policy announcements on interest rates at the very short end, one would expect a coefficient close to one: an unexpected change in the policy rates should be reflected one to one. Instead, the estimated coefficients are much smaller than one. One possible reason for this lies in the accuracy of our expectation measure. Since it is obtained from surveys, it need not capture the market expectations precisely. Since the surveys are generally conducted some days prior to the announcements, expectations can change in the meantime. However, the general significance of the regressors indicates that the measure performs relatively well. Söderström (2001) has furthermore shown that it is difficult for futures-based expectation measures to outperform the survey-based measures. Table 9d confirms this finding. In a robustness test, we calculate the effects of monetary policy surprises derived from financial markets. For the US, we use the measures of surprise by Kuttner (2001), which are derived from the federal funds futures markets. For the euro area, our measures are taken from Würtz (2002), calculated from forward rates. The estimation period is identical to the one underlying Table 9c. The results obtained are remarkably similar qualitatively; however, the coefficients estimated in the mean equations increase only for the US case, whereas we find them to be even smaller for the euro area surprises. We take these results as evidence that our surprise measures are of high quality.

Another explanation of the low coefficients could be non-linearities in the effects, e.g., depending on market uncertainty. Third, for the German and euro area case, the Governing Council meetings were taking place fortnightly. Policy decisions can therefore be taken twice within one month. This means that a policy move that was expected for the next

meeting, but occurs already at the present meeting, has to some extent been priced into the one month interest rates. In such a case, the market reaction to a surprise should be lower than one to one.

## **6. The effects of macroeconomic announcements**

### **6.1 Pre EMU**

In this section, we will extend our analysis to include the effects of releases of macroeconomic news. Since the dataset comprises a variety of news releases, the econometric models are parameterised much more heavily than in the preceding section. All results presented here are therefore based on the WLS estimators discussed in section 3. Table 10 reports the results for Germany, i.e. the period 1993-1998, for 1-year interbank rates.<sup>8</sup> Most macro announcements have relatively larger effects on the long maturities, which is in line with the results in Fleming and Remolona (1999) and intuitive for the reasons explained in section 2.3.

Table 10 around here

The results for the mean equations show that several macro announcements reveal information to the markets. For Germany, news on German consumer prices, M3 and unemployment are regarded as important indicators for the future course of monetary policy. All variables have the expected sign: unemployment should enter with a negative sign, since higher than expected unemployment should eventually lead to a monetary policy easing. Interestingly, news on the Ifo index, which is probably the most important German sentiment indicator, does not affect interest rates significantly. For the US, we find US consumer prices, non-farm payrolls, industrial production, retail sales, as well as the NAPM and consumer confidence indicators to matter for interest rate levels.

Whereas announcements do generally matter in the own country, there is little evidence that news spill over to the other country. However, the lag of US interest rates matters for German rates the subsequent day. This implies that there has been a general linkage of markets: the German market has to some extent followed the developments in the US. On

---

<sup>8</sup> The lag lengths for this model were chosen to be 1 for the mean equations (5) and (6), and 2 for the variance equations (7) and (8), according to the Schwarz information criterion.

top of this general linkage, however, news on specific US variables does not have additional consequences for German rates.

The linkages are somewhat stronger, though, when looking at the variance equations. Here, volatility in one market is generally transmitted to the other country, in both directions. Additionally, there are some cases where foreign news can affect the volatility in the home market. Interestingly, news on nearly all announcements increases the volatility of interest rates (with the exception of news on German unemployment).

## 6.2 Changes over time

Beyond the static picture of the preceding section, we are interested in the evolution over time, to understand whether the degree and nature of the interdependence of markets has changed. In order to do so, we repeat the analysis of the preceding section, but perform rolling window regressions. The first window comprises the sample of January 1993 to December 1996. Subsequently, this window is moved in monthly steps. We extend the sample to January 2002 by extending the German interest rates with euro area rates after January 1999. Regarding the regressors, the same is done for the monetary policy decisions, as well as for the news on M3, since the German series is not continued after 1998. Accordingly, we can estimate the model for 62 windows, with the last one covering a sample from February 1998 to January 2002.<sup>9</sup>

Figures 3a to 3d represent the results of these regressions. Each graph contains the estimated parameters for one news variable, with their evolution over the 62 windows on the x-axis. The parameters are shown with confidence bands that test the significance of parameters at the 90% level.

Figures 3a to 3d around here

The parameters of the German mean equation are shown in figure 3a. Overall, the results do confirm the picture gained in the preceding section:<sup>10</sup> German news is important for German interest rates. However, the rolling window regressions reveal that US news have become more important over time. US monetary policy, the NAPM and the consumer

---

<sup>9</sup> We chose rolling-window rather than recursive estimation, because the former allows us to better identify the time dynamics in the coefficients. Due to the short sample available, the results of a recursive estimation continuously place strong weights on the initial periods, which are uninformative if learning processes are present.

<sup>10</sup> The sample period of table 9b corresponds to the first 24 windows.

confidence indices as well as retail sales have begun to move the German market. Note also that the importance of developments in the US market in general, as presented by the parameter on the US lagged interest rate changes, has continuously and considerably grown in size.

Interestingly, the same pattern can now be found in the US mean equation. The developments in the German and euro area markets, as measured by the lag of German and euro area interest rates, do spill over to the US. Again, their importance has continuously grown over time, and does now stand at a comparable magnitude to the one estimated in Germany and the euro area. Beyond that, however, news on specific German variables is still not capable of moving the US market. Regarding US news, most effects are estimated to be rather stable over time.

Turning to the variance equations, the parameters of which are depicted in figures 3c and 3d, we find transmission of volatility in both directions: the respective foreign lags are generally important. For the German and euro area market, only very few types of news affect the volatility in a consistent and significant way, whereas for the US, a clearer pattern emerges: a number of news leads to a higher volatility. An interesting finding in both the German and the US mean equation is that monetary policy increased volatility at the beginning of the sample, but that this effect has disappeared in the meantime.

### **6.3 EMU**

The rolling window regressions of the preceding section have included the years of EMU, although with German variables. However, for the ECB's monetary policy, euro area developments should be of higher interest than German news. In this section, we will therefore extend the analysis to euro area macroeconomic news. However, one issue needs to be kept in mind. After the formation of EMU, markets first had to learn about the ECB's monetary policy. Gaspar et al. (2001) provide evidence for learning effects in the money market: looking at overnight rates, they find that the markets have adjusted to the changed operational framework within a couple of days after January 1<sup>st</sup>, 1999. Learning about the operational framework in which banks operate is much simpler than learning about the monetary policy reaction function of a central bank, though, not least because of the fewer events from which markets can learn. We would therefore expect that the market has taken considerably more time to learn about the relevant news. Rather than estimating one model



for the EMU period, we do thus consider it more revealing to perform rolling-window regressions again.<sup>11</sup>

Figures 4a to 4d around here

We estimate the models for 18-month windows.<sup>12</sup> Hence, the first window is estimated for January 1999 to June 2000, the last for August 2000 to January 2002. All in all, 20 windows are estimated in this fashion. Due to the small sample size, the results have to be interpreted with caution. Given the few news releases in each window, the precision of the estimates is likely to suffer. Nonetheless, in figures 4a to 4d the results are presented with confidence bands that test the significance of parameters at the 90% level again.

Looking at the parameters of the euro-area mean equation in figure 4a, the following points emerge. News on the ECB monetary policy moves the market – not unexpectedly, given the results of section 5, where the same test was conducted in the EGARCH framework. Somewhat surprisingly, we cannot detect a significant response of markets to news in the euro area HICP. However, the caveat about the short sample size of each window is likely to bite here. It is interesting, though, that the point estimate of this parameter is declining from a very high level. The initial coefficients for the euro area are in the range of 0.024 to 0.045. Towards the end of the sample, in the last window, they stand at 0.008, and have now reached the same order of magnitude than the corresponding German figure, which stood at 0.007 (see table 10).

The coefficients of euro area M3 are instead following an upward trend, at increasing levels of significance. Again, the number obtained for the last window compares favourably with the one estimated for Germany prior to EMU: 0.032 for the euro area, against 0.024 for Germany.

Looking at the effects of US news on the euro area interest rates, various issues arise. The lagged US interest rate changes have once more increased in importance. At the very end of the sample, US GDP and industrial production show a sizeable effect that had not been

---

<sup>11</sup> As a matter of fact, the estimation of the full sample 1999-2002 yields sometimes implausible counterintuitive results. It can be debated whether time variations found with 18-month windows can be interpreted as learning effects or whether they simply reflect noise in the estimates due to the short samples. However, given that many of our parameter estimates show a trending behaviour over time in the euro area, as opposed to the US, where most parameters are estimated to be relatively stable over time, we are confident that the time variation is not simply due to noisy estimates.

<sup>12</sup> The lag length, according to the Schwarz information criterion, is 1 for both mean equations and the US variance equation, and 2 for the euro area variance equation.

observed before. These windows comprise the beginning of the latest US recession in March 2001. In times of recessions, data on US output seems to be of higher importance for the euro area markets. This can be explained by two factors. First, it is likely that in times of recessions, spillovers in the real economy intensify, thus making US developments more important for the euro area economy. Second, in such a situation, the shorter publication lag of US figures compared to European data (see figure 1) becomes especially relevant: US data are then leading indicators for the euro area.

The volatility in the euro area market has also been subject to considerable changes. With the effects of HICP news returning to normal, their impact on the volatility of markets decreases. Interestingly, the effects of governing council meetings on the volatility of markets have at most times been insignificant. This is consistent with the findings of Gaspar et al. (2001) for the overnight rates. In this learning process, the importance of US news for the euro area volatility has generally declined. Whereas news on the US N.A.P.M. and the consumer confidence indicators, as well as on US CPI initially strongly affected euro area volatility, no effect can be found any longer.

There are thus several indications that US announcements are relatively more closely watched in the euro area in times of increased uncertainty. In the early periods of EMU, euro area market volatility was strongly influenced by US announcements, and with the 2001 recession, US output figures became important indicators for the euro area economy.

## **7. Nonlinearities**

As discussed in section 2, the literature on herd behaviour and informational cascades stresses that, depending on how market participants process and interpret news, the same news can have a vastly different effect on markets under different market conditions.<sup>13</sup> The news content of an announcement may, under some circumstances, depend crucially on the deviation of the announcement from an objective or subjectively perceived benchmark. For instance, nonlinearities in the (perceived) monetary policy reaction function could lead to such situations. Assume that a CPI announcement is substantially beyond a (declared or market perceived) threshold at or above which a monetary policy reaction is likely to take place. In such a case, the market can easily anticipate the future course of monetary policy: a policy reaction is almost certain. If the announcement has been expected to be beyond this threshold, then additional surprise components, which move the CPI yet further away from

the threshold, are unlikely to change market participants' expectations of monetary policy. Since monetary policy had already been expected to react, this expectation is not likely to change, such that the announcement will have little or no effect on the level or the volatility of interest rates. By contrast, a surprise may have a larger effect if the announced CPI figure is closer to the benchmark. In this case, markets have to assess whether the surprise is likely to trigger a monetary policy reaction, in which case interest rate levels will adjust much more strongly. Due to the higher uncertainty this implies, also the interest rate volatility is likely to react more strongly.

It is easier to define such a benchmark for some variables than for others. We chose the mean of the announcements over the full period 1993-2002 for each variable as its benchmark. The intuition for using this benchmark is that if a macroeconomic variable is far below or far above its usual (potential) rate, the market has strong expectations about the direction of monetary policy, such that additional information (as measured by the surprises) may have less of an impact. By contrast, if announcements are close to their mean, surprises may give information about changes in the direction of the economy and of monetary policy, and hence have a larger effect.<sup>14</sup>

In order to test for the presence of such effects, the parameters for the news and spillover effects ( $\gamma_i s_{i,t}$ ) in the mean equations (5)-(6) for the WLS estimations are modified in the following way

$$\Delta r_t^{EA} = \dots + \sum_{i=1}^I \lambda_{1i}^{EA} s_{i,t}^{EA} + \sum_{i=1}^I \mu_{1i}^{EA} s_{i,t}^{EA} D_{i,t}^{EA} + \sum_{j=1}^J \lambda_{1,j}^{US} s_{j,t}^{US} + \sum_{j=1}^J \mu_{1,j}^{US} s_{j,t}^{US} D_{j,t}^{US} + \dots \quad (9)$$

$$\Delta r_t^{EA} = \dots + \sum_{i=1}^I \lambda_{2i}^{EA} s_{i,t}^{EA} + \sum_{i=1}^I \mu_{2i}^{EA} s_{i,t}^{EA} D_{i,t}^{EA} + \sum_{j=1}^J \lambda_{2,j}^{US} s_{j,t}^{US} + \sum_{j=1}^J \mu_{2,j}^{US} s_{j,t}^{US} D_{j,t}^{US} + \dots \quad (10)$$

with  $D_{i,t} = 1$  if the deviation of the announcement  $A_{i,t}$  is in the top or bottom quartiles of its distribution, and  $D_{i,t} = 0$  otherwise. Analogous specifications are used for the variance equations (7)-(8).

<sup>13</sup> Tests for asymmetric effects of positive vs. negative and small vs. large surprises did generally not deliver significant results.

<sup>14</sup> Note that the average, annualised *announced* CPI rate was 1.9% for Germany and 2.5% for the US in 1993-2002, and 2.4% for the euro area in 1999-2002. The average, annual *announced* M3 growth rate was 6.3% for Germany and 5.8% for the euro area over the same sample periods. See Table 5 for the summary statistics. Changing the benchmark from the mean to other definitions, such as the 2% inflation target for the euro area, does not change the econometric results significantly.

Tables 11a and 11b around here

Table 11a presents the results for Germany, and Table 11b for the US. The results for the US mean and variance equations are very compelling. Announcement surprises generally have a significantly larger effect on money markets in the US if deviations from the benchmark were small. This holds for five out of the seven macroeconomic variables. A similar result holds for the variance equation, where three of the macroeconomic announcement surprises increase market volatility relatively more if the deviation is small. For Germany, there is less evidence of such nonlinear effects with respect to the German data. However, significant nonlinearities can be found in the variance equation for the effect of US variables on German money markets. As was the case for the US, the macroeconomic announcement surprises do generally increase market volatility relatively more if the deviation is small.

This points to nonlinearities in the way markets process information. When macroeconomic announcements are far from their long run average, markets have a relatively clear view of the future course of monetary policy. The arrival of new information does therefore not change their assessment of the future direction of interest rates. On the other hand, if the announced values are close to their long run averages, the markets will eventually have to change their expectations on the future course of monetary policy. This necessitates relatively strong changes in interest rates, and leads to market uncertainty, as reflected in the relatively strong increase in volatility.

## **8. Conclusions**

This paper has investigated the degree and changing nature of interdependence between the US and the euro area from a financial market perspective. Specifically, it has analysed the effects of macroeconomic and monetary policy news on money market interest rates in the US and Germany prior to EMU, and the US and the euro area since 1999.

This approach has allowed us to address two closely related questions. First, the paper has investigated whether EMU changed the degree of interdependence between the US and the euro area. We find that the euro area and the US have become generally more interdependent over time, and in particular after the advent of EMU. Nevertheless, there is evidence that euro area financial markets react more strongly to news in the US than vice

versa. There are in particular some US macroeconomic announcements to which European markets react significantly, especially in times of increased uncertainty, like the initial period of EMU or the 2001 recession.

Second, the paper has analysed how the market perception of monetary policy in the US and in particular the euro area has evolved. The empirical results support the hypothesis that markets were going through a learning process about the ECB monetary policy at the beginning of the EMU period. Moreover, we find that the importance of euro area consumer prices and M3 has reached levels in recent years that are remarkably similar to the role of German consumer prices and M3 for German interest rates prior to EMU. In this regard, the results show a significant similarity in market perceptions of ECB and Bundesbank policies. Throughout this learning process, the importance given to US news has declined.

Finally, we find evidence for nonlinearities of announcement and spillover effects. When macroeconomic announcements are far from their long run average, markets have a relatively clear view of the future course of monetary policy. This has been shown to lead to a subdued reaction of interest rates and volatility.

## References

- Andersen, T.G. and T. Bollerslev (1998). Deutsche Mark-Dollar Volatility: Intraday Activity Patterns, Macroeconomic Announcements, and Longer Run Dependencies. *Journal of Finance* 53, 219-265.
- Andersen, T.G., Bollerslev, T., Diebold, F.X. and C. Vega (2002). Micro Effects of Macro Announcements: Real-Time Price Discovery in Foreign Exchange. Forthcoming, *American Economic Review*.
- Banerjee, A.V. (1992). A Simple Model of Herd Behavior. *Quarterly Journal of Economics* 93(3), 797-817.
- Becker, K., Finnerty, J. and K. Kopecky (1995). Domestic Macroeconomic News and Foreign Interest Rates. *Journal of International Money and Finance* 14, 763-783.
- Bikchandani, S, Hirshleifer D. and I. Welch (1992). A Theory of Fads, Fashion, Custom and Cultural Change as Informational Cascades. *Journal of Political Economy* 100, 992-1026.
- Bonser-Neal, C. and G. Tanner (1996). Central Bank Intervention and the Volatility of Foreign Exchange Rates: Evidence from the Options Market. *Journal of International Money and Finance* 15, 853-878.
- Demiralp, S. and O. Jordá (2002). The Announcement Effect: Evidence from Open Market Desk Data. *Federal Reserve Bank of New York Economic Policy Review* 8, 29-48.
- Fleming, M. and E. Remolona (1997). What Moves the Bond Market? *Federal Reserve Bank of New York Economic Policy Review* 3(4), 31-50, December.
- Fleming, M. and E. Remolona (1999). The Term Structure of Announcement Effects. *Federal Reserve Bank of New York Staff Report No. 76*.
- Galati, G. and C. Ho. (2001). Macroeconomic News and the Euro/Dollar Exchange Rate. Bank for International Settlements Working Paper No 105, December.
- Gaspar, V., Pérez Quirós, G. and J. Sicilia (2001). The ECB Monetary Policy Strategy and the Money Market. *International Journal of Finance and Economics* 6(4), 325-42.
- Gravelle, T. and R. Moessner (2001). Reactions of Canadian Interest Rates to Macroeconomic Announcements: Implications for Monetary Policy Transparency. Bank of Canada Working Paper 2001-5.
- Kearney, A.A. (2002). The Changing Impact of Employment Announcements on Interest Rates. *Journal of Economics and Business* 54, 415-429.
- Kim, S.-J., and J. Sheen (2000). International Linkages and Macroeconomic News Effects on Interest Rate Volatility – Australia and the US. *Pacific-Basin Finance Journal* 8, 85-113.
- Kuttner, K. (2001). Monetary Policy Surprises and Interest Rates: Evidence from the Fed Funds Futures Market. *Journal of Monetary Economics* 47, 523-544.
- Lange, J, Sack, B. and W. Whitesell (2001). Anticipations of Monetary Policy in Financial Markets. Board of Governors of the Federal Reserve Finance and Economics Discussion Series 2001-24, Washington D.C.
- Madura, J. and A. Tucker (1992). Trade Deficit Surprises and the Ex Ante Volatility of Foreign Exchange Rates. *Journal of International Money and Finance* 11, 492-501.

- Nelson, D. (1991). Conditional heteroskedasticity in asset returns: A New Approach. *Econometrica* 59, 347-370.
- Rolley, V. and G. Sellon (1998). The Response of Interest Rates to Anticipated and Unanticipated Monetary Policy Actions. Working Paper, University of Washington, Seattle, WA, June.
- Söderström, U. (2001). Predicting Monetary Policy with Federal Funds Futures Prices. *Journal of Futures Markets* 21(4), 377-391.
- Thornton, D.L. (1998). Tests of the Market's Reaction to Federal Funds Rate Target Changes. *Federal Reserve Bank of St. Louis Review*, 25-36.
- Würtz, F.R. (2002). A Comprehensive Model on the Euro Overnight Rate. Mimeo, European Central Bank.

## Appendix

**Table 1: Summary statistics for monetary policy announcements, surveys, and surprises**

|                                      | Announcement              |                            | Survey                   |                  |                            | Surprise         |   |    |
|--------------------------------------|---------------------------|----------------------------|--------------------------|------------------|----------------------------|------------------|---|----|
| <b>Monetary policy announcements</b> | <b>Number of meetings</b> | <b>Mean abs. announc.*</b> | <b>Mean abs. survey*</b> | <b>Std. Dev.</b> | <b>Mean abs. surprise*</b> | <b>Std. Dev.</b> | <b>Number of forecasts "correct" "false" **</b> |    |
| <b>Federal Reserve</b>               | 78                        | 0.144                      | 0.120                    | 0.211            | 0.049                      | 0.112            | 71  | 7  |
| <b>Bundesbank</b>                    | 144                       | 0.040                      | 0.025                    | 0.066            | 0.044                      | 0.113            | 132   | 12 |
| <b>ECB</b>                           | 73                        | 0.058                      | 0.041                    | 0.086            | 0.051                      | 0.105            | 70  | 3  |

|                        | <b>Number of changes</b> | <b>Mean abs. changes*</b> | <b>Mean abs. survey*</b> | <b>Std. Dev.</b> | <b>Mean abs. surprise*</b> | <b>Std. Dev.</b> | <b>Number of forecasts "correct" "false" **</b> |    |
|------------------------|--------------------------|---------------------------|--------------------------|------------------|----------------------------|------------------|---|----|
| <b>Federal Reserve</b> | 31                       | 0.363                     | 0.281                    | 0.334            | 0.102                      | 0.173            | 24  | 7  |
| <b>Bundesbank</b>      | 13                       | 0.442                     | 0.120                    | 0.120            | 0.322                      | 0.114            | 3   | 10 |
| <b>ECB</b>             | 12                       | 0.354                     | 0.147                    | 0.190            | 0.207                      | 0.249            | 9   | 3  |

Notes:

\* Means are calculated from the absolute numbers of the announcements, surveys and surprises.

\*\* A "correct" forecast is defined as an absolute surprise of within 25 basis points of the announcement or change.

Source: Federal Reserve, Bundesbank, ECB, Reuters, own calculations.



**Table 2: Test of unbiasedness of forecasts of monetary policy announcements**

|                        | $\alpha$ | t-stats | $\beta$ | t-stats | R <sup>2</sup> | Wald test | p-value | # obs. |
|------------------------|----------|---------|---------|---------|----------------|-----------|---------|--------|
| <b>Federal Reserve</b> | -0.013   | (-1.01) | 1.039   | (17.19) | 0.795          | 0.73      | [0.483] | 78     |
| <b>Bundesbank</b>      | -0.015   | (-1.47) | 0.988   | (6.90)  | 0.251          | 1.190     | [0.306] | 144    |
| <b>ECB</b>             | -0.006   | (-0.76) | 1.164   | (11.50) | 0.381          | 1.970     | [0.142] | 73     |

Source: Federal Reserve, Bundesbank, ECB, Reuters, own calculations.

Following Gravelle and Moessner (2001), Table 2 shows the results for the test of forecast unbiasedness of the monetary policy announcements ( $A_{k,t}$ ) based on the following equation:

$$A_{k,t} = \alpha + \beta S_{k,t} + \varepsilon_{k,t} \quad (\text{A.1})$$

where  $S_{k,t}$  is the announcement surprise. The unbiasedness test is a Wald test of the joint hypothesis  $H_0: \alpha=0$  and  $\beta=1$ . This hypothesis is rejected at the 90% level for monetary policy announcements of all three central banks.

**Table 3: Test of efficiency of forecasts of monetary policy announcements**

|                        | R <sup>2</sup> | Wald test | p-value | # obs. |
|------------------------|----------------|-----------|---------|--------|
| <b>Federal Reserve</b> | 0.078          | 0.92      | [0.486] | 72     |
| <b>Bundesbank</b>      | 0.020          | 0.44      | [0.851] | 138    |
| <b>ECB</b>             | 0.038          | 0.430     | [0.854] | 67     |

Source: Federal Reserve, Bundesbank, ECB, Reuters, own calculations.

The test for efficiency of the forecasts is conducted by testing whether forecast errors of monetary policy decisions ( $A_{k,t} - E_{k,t}$ ) can be predicted systematically on the basis of past announcements:

$$A_{k,t} - E_{k,t} = \zeta + \sum_{p=1}^P \psi_p A_{k,t-p} + \varepsilon_{k,t} \quad (\text{A.2})$$

with the lag length usually chosen as  $P=6$ . The hypothesis to be tested is  $\psi_1 = \psi_2 = \dots = \psi_P = 0$ . The Wald tests show that this hypothesis can be rejected for all three monetary policy announcements.

**Table 4: Macroeconomic announcements, release dates and times**

| Announcement                     | Period                  | # Observ. | Usual<br>Release | intra-month |       | lag: # of<br>months |
|----------------------------------|-------------------------|-----------|------------------|-------------|-------|---------------------|
|                                  |                         |           |                  | min         | max   |                     |
| <b>Euro Area</b>                 |                         |           |                  |             |       |                     |
| Business confidence balance      | 06/05/1999 - 04/02/2002 | 31        | 12:00            | 2           | 8     | 1                   |
| Harmonised CPI M/M (%)           | 29/01/1999 - 28/02/2002 | 38        | 12:00            | 16          | 28    | 1                   |
| Purch. Managers Index, SA        | 02/08/1999 - 01/02/2002 | 31        | 10:00            | 1           | 3     | 1                   |
| GDP prel. Q/Q (%)                | 05/03/1999 - 29/11/2001 | 12        | 12:00            | 5           | 14    | 3                   |
| Industrial production M/M SA (%) | 18/01/1999 - 19/02/2002 | 39        | 12:00            | 17          | 28    | 2                   |
| M3 Y/Y (%)                       | 01/02/1999 - 27/02/2002 | 38        | 10:00            | 25          | 30    | 2                   |
| PPI M/M (%)                      | 18/01/1999 - 04/02/2002 | 38        | 12:00            | 4           | 8     | 2                   |
| Retail Sales SA M/M (%)          | 12/04/2000 - 31/01/2002 | 23        | 12:00            | 1           | 9     | 3                   |
| Trade ex-EMU prelim.             | 21/01/1999 - 22/02/2002 | 39        | 12:00            | 19          | 30    | 2                   |
| Unemployment rate (%)            | 07/01/1999 - 05/02/2002 | 38        | 12:00            | 1           | 8     | 2                   |
| <b>Germany</b>                   |                         |           |                  |             |       |                     |
| GDP Q/Q (%)                      | 09/03/1993 - 27/02/2002 | 37        | 08:00            | 23          | 10    | 2/3                 |
| Ifo Business Climate Index       | 24/03/1993 - 26/02/2002 | 107       | 10:00            | 15          | 27    | 1                   |
| PPI M/M (%)                      | 18/03/1993 - 28/02/2002 | 108       | 08:00            | 17          | 27    | 1                   |
| Retail Sales, real SA M/M (%)    | 15/03/1993 - 14/02/2002 | 105       | 08:00            | 9           | 18    | 2                   |
| Trade Balance                    | 16/03/1993 - 12/02/2002 | 109       | 08:00            | 10          | 16/29 | 2                   |
| M3 Y/Y (%)                       | 18/03/1993 - 25/01/1999 | 70        | 09:30            | 18          | 26    | 1                   |
| Unemployment rate (%)            | 05/03/1993 - 06/02/2002 | 108       | 10:00            | 3           | 10    | 1                   |
| CPI M/M (%)                      | 01/03/1993 - 25/02/2002 | 107       | after 11:00      | 23          | 30    | 0                   |
| Industrial production SA M/M (%) | 02/03/1993 - 08/02/2002 | 107       | various          | 1           | 10    | 2                   |
| Manufacturing orders M/M (%)     | 04/03/1993 - 07/02/2002 | 108       | after 11:00      | 1           | 10    | 2                   |
| <b>USA</b>                       |                         |           |                  |             |       |                     |
| Real GDP (S.A.A.R.) Advance Y/Y  | 27/04/1990 - 26/04/2002 | 49        | 08:30            | 26          | 31    | 1                   |
| Consumer confidence              | 30/07/1991 - 30/04/2002 | 130       | 10:00            | 24          | 31    | 0                   |
| CPI M/M (%)                      | 22/02/1980 - 16/04/2002 | 267       | 08:30            | 12          | 21    | 1                   |
| Housing starts                   | 18/03/1980 - 16/04/2002 | 262       | 08:30            | 16          | 20    | 1                   |
| Industrial production SA M/M (%) | 15/02/1980 - 16/04/2002 | 267       | 09:15            | 13          | 17    | 1                   |
| N.A.P.M.                         | 01/02/1990 - 01/05/2002 | 148       | 10:00            | 1           | 4     | 1                   |
| Nonfarm payrolls                 | 07/02/1980 - 03/05/2002 | 268       | 08:30            | 1           | 9     | 1                   |
| PPI M/M (%)                      | 15/02/1980 - 12/04/2002 | 267       | 08:30            | 9           | 16    | 1                   |
| Retail sales (%)                 | 11/02/1980 - 12/04/2002 | 267       | 08:30            | 9           | 15    | 1                   |
| Trade balance                    | 28/02/1980 - 17/04/2002 | 266       | 08:30            | 15          | 22    | 2                   |
| Unemployment rate (%)            | 01/02/1980 - 03/05/2002 | 268       | 08:30            | 1           | 10    | 1                   |
| Average workweek                 | 05/11/1998 - 03/05/2002 | 43        | 08:30            | 2           | 8     | 1                   |

Source: MMS.

**Table 5: Summary statistics for macroeconomic announcements, surveys, and surprises**

| Announcement                        | Announcement |           | Survey  |           | Surprise |           |
|-------------------------------------|--------------|-----------|---------|-----------|----------|-----------|
|                                     | Mean         | Std. Dev. | Mean    | Std. Dev. | Mean     | Std. Dev. |
| <b>Euro Area</b>                    |              |           |         |           |          |           |
| Business confidence balance         | -4.185       | 7.458     | -4.519  | 7.802     | 0.333    | 1.000     |
| Harmonised CPI M/M (%)              | 0.197        | 0.211     | 0.171   | 0.169     | 0.026    | 0.092     |
| Purch. Managers Index, SA           | 53.000       | 5.345     | 53.213  | 5.456     | -0.213   | 1.036     |
| GDP prel. Q/Q (%)                   | 0.542        | 0.320     | 0.542   | 0.337     | 0.000    | 0.074     |
| Industrial production M/M SA (%)    | 0.223        | 0.815     | 0.169   | 0.669     | 0.055    | 0.591     |
| M3 Y/Y (%)                          | 5.829        | 0.971     | 5.707   | 0.950     | 0.122    | 0.409     |
| PPI M/M (%)                         | 0.174        | 0.367     | 0.156   | 0.303     | 0.018    | 0.145     |
| Retail Sales SA M/M (%)             | 0.204        | 0.551     | 0.182   | 0.218     | 0.022    | 0.455     |
| Trade ex-EMU prelim.                | 3.485        | 3.799     | 3.224   | 3.513     | 0.261    | 2.531     |
| Unemployment rate (%)               | 9.326        | 0.831     | 9.356   | 0.817     | -0.030   | 0.085     |
| <b>Germany</b>                      |              |           |         |           |          |           |
| GDP Q/Q (%)                         | 0.346        | 0.641     | 0.322   | 0.607     | 0.024    | 0.212     |
| Ifo Business Climate Index          | 95.009       | 5.256     | 95.048  | 4.325     | -0.039   | 1.162     |
| PPI M/M (%)                         | 0.069        | 0.275     | 0.094   | 0.163     | -0.026   | 0.215     |
| Retail Sales, real SA M/M (%)       | -0.795       | 3.044     | -0.732  | 1.732     | -0.063   | 2.781     |
| Trade Balance                       | 4.691        | 1.894     | 4.353   | 1.330     | 0.338    | 1.442     |
| M3 Y/Y (%)                          | 6.294        | 4.711     | 5.853   | 3.933     | 0.441    | 1.872     |
| Unemployment rate (%)               | 6.009        | 31.292    | 3.126   | 20.475    | 2.883    | 23.194    |
| CPI M/M (%)                         | 0.159        | 0.231     | 0.154   | 0.187     | 0.005    | 0.128     |
| Industrial production SA M/M (%)    | 0.183        | 1.945     | 0.197   | 0.815     | -0.014   | 1.742     |
| Manufacturing orders M/M (%)        | 0.278        | 2.401     | 0.128   | 0.889     | 0.150    | 2.185     |
| <b>USA</b>                          |              |           |         |           |          |           |
| Real GDP (S.A.A.R.) Advance Y/Y (%) | 3.234        | 1.735     | 2.830   | 1.592     | 0.404    | 0.772     |
| Consumer confidence                 | 110.188      | 23.523    | 109.466 | 23.204    | 0.723    | 4.960     |
| CPI M/M (%)                         | 0.204        | 0.169     | 0.227   | 0.111     | -0.023   | 0.119     |
| Housing starts                      | 1.503        | 0.152     | 1.489   | 0.134     | 0.013    | 0.069     |
| Industrial production SA M/M (%)    | 0.209        | 0.490     | 0.161   | 0.347     | 0.048    | 0.253     |
| N.A.P.M.                            | 51.812       | 4.683     | 51.974  | 4.431     | -0.162   | 1.933     |
| Nonfarm payrolls                    | 152.759      | 174.240   | 161.045 | 108.197   | -8.286   | 118.643   |
| PPI M/M (%)                         | 0.102        | 0.420     | 0.165   | 0.193     | -0.063   | 0.304     |
| Retail sales (%)                    | 0.318        | 0.921     | 0.332   | 0.502     | -0.014   | 0.652     |
| Trade balance                       | -16.349      | 8.676     | -16.163 | 8.716     | -0.186   | 1.837     |
| Unemployment rate (%)               | 5.179        | 0.911     | 5.220   | 0.934     | -0.042   | 0.143     |
| Average workweek                    | 34.376       | 0.191     | 34.386  | 0.190     | -0.010   | 0.094     |

Source: MMS, own calculations.

**Table 6: Tests of unbiasedness of forecasts of macroeconomic announcements**

| Announcement                        | $\alpha$ | t-stats | $\beta$ | t-stats | R <sup>2</sup> | Wald test | p-value | # obs. |
|-------------------------------------|----------|---------|---------|---------|----------------|-----------|---------|--------|
| <b>Euro Area</b>                    |          |         |         |         |                |           |         |        |
| Business confidence balance         | 0.310    | (1.34)  | 0.995   | (36.98) | 0.982          | 1.460     | [0.250] | 31     |
| Harmonised CPI M/M (%)              | 0.000    | (0.18)  | 1.131   | (12.85) | 0.821          | 2.710     | [0.079] | 38     |
| Purch. Managers Index, SA           | 0.943    | (0.49)  | 0.978   | (27.43) | 0.964          | 0.810     | [0.456] | 31     |
| GDP prel. Q/Q (%)                   | 0.000    | (0.95)  | 0.928   | (14.18) | 0.953          | 0.610     | [0.564] | 12     |
| Industrial production M/M SA (%)    | 0.001    | (1.26)  | 0.887   | (5.82)  | 0.507          | 0.890     | [0.419] | 39     |
| M3 Y/Y (%)                          | 0.003    | (1.62)  | 0.948   | (28.00) | 0.959          | 1.490     | [0.239] | 38     |
| PPI M/M (%)                         | 0.000    | (-0.34) | 1.154   | (14.43) | 0.867          | 2.120     | [0.136] | 38     |
| Retail Sales SA M/M (%)             | 0.001    | (1.07)  | 0.940   | (1.74)  | 0.168          | 0.590     | [0.564] | 23     |
| Trade ex-EMU prelim.                | 0.737    | (1.09)  | 0.828   | (5.43)  | 0.584          | 0.750     | [0.482] | 39     |
| Unemployment rate (%)               | 0.002    | (1.00)  | 0.980   | (57.13) | 0.989          | 3.030     | [0.061] | 38     |
| <b>Germany</b>                      |          |         |         |         |                |           |         |        |
| GDP Q/Q (%)                         | 0.000    | (0.59)  | 0.996   | (16.14) | 0.891          | 0.210     | [0.815] | 37     |
| Ifo Business Climate Index          | 3.638    | (1.16)  | 0.961   | (29.16) | 0.929          | 0.720     | [0.488] | 107    |
| PPI M/M (%)                         | 0.000    | (-1.39) | 1.084   | (8.39)  | 0.406          | 0.960     | [0.385] | 108    |
| Retail Sales, real SA M/M (%)       | -0.008   | (-2.59) | 0.848   | (4.64)  | 0.221          | 3.440     | [0.037] | 105    |
| Trade Balance                       | 1.296    | (2.54)  | 0.790   | (7.38)  | 0.355          | 4.760     | [0.010] | 109    |
| M3 Y/Y (%)                          | -0.001   | (-0.28) | 1.093   | (19.02) | 0.846          | 3.240     | [0.045] | 70     |
| Unemployment rate (%)               | 2.801    | (1.24)  | 1.026   | (9.33)  | 0.451          | 0.860     | [0.427] | 108    |
| CPI M/M (%)                         | 0.000    | (0.08)  | 1.025   | (15.42) | 0.694          | 0.160     | [0.855] | 107    |
| Industrial production SA M/M (%)    | -0.002   | (-1.13) | 0.953   | (4.53)  | 0.166          | 0.760     | [0.468] | 107    |
| Manufacturing orders M/M (%)        | 0.001    | (0.63)  | 1.128   | (4.73)  | 0.174          | 0.400     | [0.673] | 108    |
| <b>USA</b>                          |          |         |         |         |                |           |         |        |
| Real GDP (S.A.A.R.) Advance Y/Y (%) | 0.005    | (1.80)  | 0.976   | (12.09) | 0.802          | 5.120     | [0.011] | 36     |
| Consumer confidence                 | 2.198    | (0.97)  | 0.986   | (48.50) | 0.956          | 1.380     | [0.255] | 112    |
| CPI M/M (%)                         | 0.000    | (-1.69) | 1.083   | (10.78) | 0.514          | 2.670     | [0.073] | 112    |
| Housing starts                      | -0.009   | (-0.12) | 1.015   | (20.69) | 0.797          | 2.120     | [0.125] | 111    |
| Industrial production SA M/M (%)    | 0.000    | (0.58)  | 1.209   | (18.27) | 0.752          | 7.150     | [0.001] | 110    |
| N.A.P.M.                            | 1.813    | (0.84)  | 0.962   | (23.29) | 0.831          | 0.850     | [0.430] | 111    |
| Nonfarm payrolls                    | -39.765  | (-2.00) | 1.195   | (11.62) | 0.551          | 2.080     | [0.129] | 112    |
| PPI M/M (%)                         | -0.002   | (-4.76) | 1.622   | (11.78) | 0.558          | 13.070    | [0.000] | 110    |
| Retail sales (%)                    | -0.001   | (-1.76) | 1.331   | (11.15) | 0.530          | 3.890     | [0.023] | 109    |
| Trade balance                       | -0.609   | (-1.66) | 0.974   | (48.82) | 0.956          | 1.430     | [0.244] | 109    |
| Unemployment rate (%)               | 0.159    | (2.13)  | 0.961   | (68.19) | 0.977          | 9.080     | [0.000] | 112    |
| Average workweek                    | 4.260    | (1.60)  | 0.876   | (11.33) | 0.762          | 1.950     | [0.155] | 43     |

Source: MMS, own calculations.

For an explanation of the unbiasedness test, see description to Table 2 above.

**Table 7: Tests of efficiency of forecasts of macroeconomic announcements**

| Announcement                        | R <sup>2</sup>       | Wald test | p-value | # obs. |
|-------------------------------------|----------------------|-----------|---------|--------|
| <b>Euro Area</b>                    |                      |           |         |        |
| Business confidence balance         | 0.531                | 2.64      | [0.063] | 25     |
| Harmonised CPI M/M (%)              | 0.175                | 0.880     | [0.522] | 32     |
| Purch. Managers Index, SA           | 0.351                | 1.620     | [0.198] | 25     |
| GDP prel. Q/Q (%)                   | too few observations |           |         |        |
| Industrial production M/M SA (%)    | 0.252                | 1.460     | [0.230] | 33     |
| M3 Y/Y (%)                          | 0.275                | 1.450     | [0.239] | 32     |
| PPI M/M (%)                         | 0.121                | 0.530     | [0.783] | 32     |
| Retail Sales SA M/M (%)             | 0.541                | 1.770     | [0.212] | 17     |
| Trade ex-EMU prelim.                | 0.500                | 2.500     | [0.071] | 33     |
| Unemployment rate (%)               | 0.132                | 0.640     | [0.701] | 32     |
| <b>Germany</b>                      |                      |           |         |        |
| GDP Q/Q (%)                         | 0.241                | 1.990     | [0.128] | 33     |
| Ifo Business Climate Index          | 0.160                | 1.900     | [0.095] | 101    |
| PPI M/M (%)                         | 0.109                | 1.870     | [0.094] | 102    |
| Retail Sales, real SA M/M (%)       | 0.200                | 4.230     | [0.004] | 99     |
| Trade Balance                       | 0.205                | 4.010     | [0.001] | 103    |
| M3 Y/Y (%)                          | 0.112                | 1.150     | [0.346] | 64     |
| Unemployment rate (%)               | 0.100                | 1.760     | [0.116] | 102    |
| CPI M/M (%)                         | 0.028                | 0.460     | [0.840] | 101    |
| Industrial production SA M/M (%)    | 0.078                | 2.040     | [0.095] | 101    |
| Manufacturing orders M/M (%)        | 0.029                | 0.470     | [0.828] | 102    |
| <b>USA</b>                          |                      |           |         |        |
| Real GDP (S.A.A.R.) Advance Y/Y (%) | 0.167                | 1.460     | [0.241] | 32     |
| Consumer confidence                 | 0.053                | 0.920     | [0.483] | 106    |
| CPI M/M (%)                         | 0.066                | 1.170     | [0.329] | 106    |
| Housing starts                      | 0.034                | 0.580     | [0.745] | 105    |
| Industrial production SA M/M (%)    | 0.076                | 1.350     | [0.243] | 104    |
| N.A.P.M.                            | 0.052                | 0.900     | [0.496] | 105    |
| Nonfarm payrolls                    | 0.023                | 0.390     | [0.885] | 106    |
| PPI M/M (%)                         | 0.057                | 0.990     | [0.435] | 104    |
| Retail sales (%)                    | 0.207                | 4.300     | [0.001] | 103    |
| Trade balance                       | 0.119                | 2.220     | [0.047] | 103    |
| Unemployment rate (%)               | 0.131                | 2.480     | [0.028] | 106    |
| Average workweek                    | 0.273                | 1.820     | [0.131] | 37     |

Source: MMS, own calculations.

For an explanation of the efficiency test, see description to Table 3 above.

**Table 8: Statistical properties of the daily interest rate changes**

|                      | Germany       | Euro Area      | United States   |
|----------------------|---------------|----------------|-----------------|
| <b>1 month rates</b> |               |                |                 |
| Mean                 | -0.004 ***    | 0.000          | -0.001          |
| Skewness             | -0.941 ***    | -1.221 ***     | -0.109 **       |
| Excess kurtosis      | 34.289 ***    | 59.578 ***     | 113.588 ***     |
| Jarque-Bera          | 76851.253 *** | 119407.250 *** | 1274108.959 *** |
| Q(40)                | 151.514 ***   | 74.757 ***     | 166.347 ***     |
| Q <sup>2</sup> (40)  | 65.042 ***    | 61.276 **      | 175.499 ***     |
| <b>3 month rates</b> |               |                |                 |
| Mean                 | -0.004 ***    | 0.000          | -0.001          |
| Skewness             | -2.104 ***    | 0.007          | -0.305 ***      |
| Excess kurtosis      | 23.581 ***    | 66.253 ***     | 20.086 ***      |
| Jarque-Bera          | 37390.909 *** | 147412.803 *** | 39876.406 ***   |
| Q(40)                | 225.439 ***   | 121.821 ***    | 485.267 ***     |
| Q <sup>2</sup> (40)  | 32.412        | 2.993          | 269.449 ***     |
| <b>6 month rates</b> |               |                |                 |
| Mean                 | -0.003 ***    | 0.000          | -0.001          |
| Skewness             | -0.526 ***    | -1.130 ***     | -0.660 ***      |
| Excess kurtosis      | 21.639 ***    | 19.876 ***     | 11.183 ***      |
| Jarque-Bera          | 30585.217 *** | 13439.419 ***  | 12520.985 ***   |
| Q(40)                | 336.399 ***   | 143.626 ***    | 235.696 ***     |
| Q <sup>2</sup> (40)  | 25.171        | 22.313         | 208.629 ***     |
| <b>1 year rates</b>  |               |                |                 |
| Mean                 | -0.003 ***    | 0.001          | -0.001          |
| Skewness             | 0.652 ***     | 0.123          | -0.560 ***      |
| Excess kurtosis      | 19.654 ***    | 7.114 ***      | 8.580 ***       |
| Jarque-Bera          | 25284.445 *** | 1701.723 ***   | 7393.886 ***    |
| Q(40)                | 184.882 ***   | 74.448 ***     | 80.882 ***      |
| Q <sup>2</sup> (40)  | 68.984 ***    | 59.628 **      | 121.081 ***     |

\*/\*\*/\*\* denotes significance at the 1/5/10% level. Jarque-Bera is the Jarque-Bera test statistic for normality; Q(40) is the Ljung-Box test statistic for serial correlation of up to 40<sup>th</sup> order; Q<sup>2</sup>(40) is the Ljung-Box test statistic for the squared interest rate changes.

**Table 9a: Effects of monetary policy surprises, 1993-2002**

| Maturity<br>(months) | European monetary policy surprise |                    | US monetary policy surprise |                   |
|----------------------|-----------------------------------|--------------------|-----------------------------|-------------------|
|                      | European mean eq.                 | US mean eq.        | European mean eq.           | US mean eq.       |
| 1                    | 0.355*** (44.975)                 | 0.067*** (8.088)   | 0.229*** (25.092)           | 0.556*** (44.578) |
| 3                    | 0.317*** (39.813)                 | -0.010 (-0.546)    | 0.134*** (8.684)            | 0.479*** (9.534)  |
| 6                    | 0.210*** (19.174)                 | -0.024 (-1.323)    | 0.029 (1.571)               | 0.410*** (9.371)  |
| 12                   | 0.203*** (16.257)                 | -0.019 (-0.669)    | 0.003 (0.145)               | 0.339*** (8.559)  |
|                      | European var. eq.                 | US variance eq.    | European var. eq.           | US variance eq.   |
| 1                    | 0.597*** (13.665)                 | -0.423*** (-8.773) | 1.148*** (24.456)           | 1.210*** (22.729) |
| 3                    | 1.571*** (32.295)                 | 0.199*** (4.042)   | -0.517*** (-14.75)          | 0.279*** (4.625)  |
| 6                    | 1.151*** (21.333)                 | 0.161** (2.553)    | 0.201*** (3.538)            | 0.082 (1.137)     |
| 12                   | 0.901*** (16.475)                 | 0.185*** (3.211)   | -0.062 (-0.953)             | -0.173** (-2.257) |

\*/\*\*/\*\* denotes significance at the 1/5/10% level. Numbers in brackets are t-statistics

**Table 9b: Effects of monetary policy surprises, 1993-1998**

| Maturity<br>(months) | European monetary policy surprise |                    | US monetary policy surprise |                   |
|----------------------|-----------------------------------|--------------------|-----------------------------|-------------------|
|                      | European mean eq.                 | US mean eq.        | European mean eq.           | US mean eq.       |
| 1                    | 0.192*** (10.475)                 | 0.021** (2.570)    | 0.233*** (12.494)           | 0.550*** (10.559) |
| 3                    | 0.216*** (14.766)                 | -0.002 (-0.152)    | 0.048* (1.866)              | 0.529*** (9.146)  |
| 6                    | 0.149*** (7.731)                  | -0.019 (-1.285)    | 0.154*** (12.136)           | 0.381*** (7.762)  |
| 12                   | 0.160*** (9.721)                  | -0.012 (-0.402)    | -0.019 (-0.482)             | 0.392*** (7.578)  |
|                      | European var. eq.                 | US variance eq.    | European var. eq.           | US variance eq.   |
| 1                    | 0.967*** (12.453)                 | -0.713*** (-11.43) | 1.034*** (17.162)           | 1.330*** (17.306) |
| 3                    | 0.937*** (10.802)                 | 0.136* (1.809)     | 0.998*** (13.226)           | 0.263*** (3.065)  |
| 6                    | 1.255*** (17.530)                 | 0.027 (0.363)      | 0.484*** (6.109)            | 0.139 (1.587)     |
| 12                   | 1.055*** (16.115)                 | 0.151** (2.043)    | -0.070 (-0.868)             | 0.011 (0.114)     |

\*/\*\*/\*\* denotes significance at the 1/5/10% level. Numbers in brackets are t-statistics

**Table 9c: Effects of monetary policy surprises, 1999-2002**

| Maturity<br>(months) | European monetary policy surprise |                  | US monetary policy surprise |                   |
|----------------------|-----------------------------------|------------------|-----------------------------|-------------------|
|                      | European mean eq.                 | US mean eq.      | European mean eq.           | US mean eq.       |
| 1                    | 0.392*** (104.51)                 | 0.062* (1.778)   | 0.247*** (15.287)           | 0.571*** (31.994) |
| 3                    | 0.308*** (24.912)                 | 0.020 (0.305)    | 0.221*** (11.830)           | 0.459*** (5.032)  |
| 6                    | 0.267*** (19.313)                 | -0.033 (-0.685)  | 0.159*** (6.798)            | 0.373*** (3.710)  |
| 12                   | 0.258*** (18.113)                 | 0.009 (0.205)    | 0.143*** (5.159)            | 0.303*** (3.340)  |
|                      | European var. eq.                 | US variance eq.  | European var. eq.           | US variance eq.   |
| 1                    | -0.373*** (-11.85)                | 0.419*** (2.669) | 1.059*** (10.412)           | 0.328* (1.945)    |
| 3                    | 0.059 (0.498)                     | 0.296*** (2.987) | -1.076*** (-9.613)          | -0.075 (-0.438)   |
| 6                    | 0.354*** (3.816)                  | 0.423*** (3.218) | -0.236* (-1.786)            | 0.253 (1.435)     |
| 12                   | -0.022 (-0.215)                   | -0.025 (-0.223)  | 0.000 (-0.001)              | -0.415** (-2.403) |

\*/\*\*/\*\* denotes significance at the 1/5/10% level. Numbers in brackets are t-statistics

**Table 9d: Effects of monetary policy surprises as measured by futures and forward rates, 1999-2002**

| Maturity<br>(months) | European monetary policy surprise |                    | US monetary policy surprise |                   |
|----------------------|-----------------------------------|--------------------|-----------------------------|-------------------|
|                      | European mean eq.                 | US mean eq.        | European mean eq.           | US mean eq.       |
| 1                    | 0.196*** (18.167)                 | -0.003 (-0.171)    | 0.293*** (9.586)            | 0.779*** (46.856) |
| 3                    | 0.074*** (10.295)                 | -0.041 (-1.599)    | 0.245*** (10.371)           | 0.624*** (5.070)  |
| 6                    | 0.088*** (12.259)                 | -0.059*** (-3.219) | 0.195*** (6.115)            | 0.534*** (4.484)  |
| 12                   | 0.078*** (4.484)                  | -0.022 (-1.304)    | 0.195*** (4.743)            | 0.466*** (3.856)  |
|                      | European var. eq.                 | US variance eq.    | European var. eq.           | US variance eq.   |
| 1                    | -0.059 (-0.659)                   | 0.365*** (3.665)   | 1.213*** (10.847)           | 1.345*** (5.848)  |
| 3                    | 0.330*** (2.797)                  | 0.108 (1.015)      | -0.101 (-0.820)             | 0.126 (0.643)     |
| 6                    | 0.068 (0.646)                     | 0.010 (0.079)      | -0.201 (-1.582)             | 0.218 (1.263)     |
| 12                   | 0.757*** (5.286)                  | 0.163 (1.362)      | 0.034 (0.239)               | -0.361** (-2.020) |

\*/\*\*/\*\* denotes significance at the 1/5/10% level. Numbers in brackets are t-statistics

**Table 10: Effects of surprises, 1993-1998**

|                 | German mean eq. |          | US mean eq. |          | German var. eq. |          | US var. eq. |          |
|-----------------|-----------------|----------|-------------|----------|-----------------|----------|-------------|----------|
| Foreign Lag     | 0.089***        | (6.910)  | 0.028       | (0.579)  | 0.100***        | (3.885)  | 0.053**     | (2.183)  |
| Ger. Mon. Pol.  | 0.294***        | (16.099) | -0.040      | (-1.097) | 0.701**         | (2.438)  | 0.441*      | (1.841)  |
| Ger. CPI        | 0.007**         | (2.384)  | -0.002      | (-0.243) | -0.422          | (-1.239) | 0.270       | (0.803)  |
| Ger. M3         | 0.024***        | (2.981)  | -0.001      | (-0.071) | -0.061          | (-0.184) | 0.020       | (0.060)  |
| Ger. Unemp.     | -0.004*         | (-1.752) | -0.004      | (-0.803) | -1.215***       | (-2.591) | -0.478      | (-1.026) |
| Ger. Ifo        | 0.008           | (0.488)  | 0.009       | (0.306)  | 0.132           | (0.399)  | -0.287      | (-0.880) |
| US Mon. Pol.    | 0.021           | (0.585)  | 0.313***    | (3.796)  | 0.006           | (0.015)  | 0.315       | (0.818)  |
| US CPI          | -0.001          | (-0.170) | 0.041*      | (1.757)  | 0.168           | (0.498)  | 0.845**     | (2.537)  |
| US Nonf. Payr.  | 0.003           | (0.476)  | 0.080***    | (4.778)  | 1.060***        | (2.994)  | 1.443***    | (4.141)  |
| US Indus. Prod. | 0.001           | (0.156)  | 0.040**     | (2.531)  | -0.402          | (-1.224) | 0.451       | (1.391)  |
| US GDP          | 0.005           | (0.379)  | -0.011      | (-0.297) | 0.037           | (0.067)  | 0.822       | (1.535)  |
| US Retail Sales | -0.002          | (-0.172) | 0.043*      | (1.673)  | 0.702**         | (2.104)  | 0.792**     | (2.422)  |
| US NAPM         | -0.002          | (-0.310) | 0.062***    | (3.051)  | 0.219           | (0.686)  | 0.847***    | (2.690)  |
| US Cons. Conf.  | -0.006          | (-0.579) | 0.111***    | (3.739)  | 0.108           | (0.332)  | 0.117       | (0.361)  |

\*/\*\*/\*\*\* denotes significance at the 1/5/10% level. Numbers in brackets are t-statistics



**Table 11a: Deviations from announcement mean – nonlinear effects for Germany mean equation, 1993-2002**

|                 | German mean equation |                    |       | German variance equation |                   |       |
|-----------------|----------------------|--------------------|-------|--------------------------|-------------------|-------|
|                 | small deviation      | large deviation    | sign. | small deviation          | large deviation   | sign. |
| Ger. Mon. Pol.  | 0.258*** (131.3)     | 0.164** (2.193)    |       | 7.883*** (4.015)         | 9.747*** (2.614)  |       |
| Ger. CPI        | 0.002 (0.355)        | 0.007** (2.062)    |       | -0.102 (-0.107)          | -0.654 (-1.205)   |       |
| Ger. M3         | 0.007 (0.429)        | 0.000 (0.034)      |       | -0.005 (-0.002)          | 1.283 (1.545)     |       |
| Ger. Unemp.     | -0.007 (-1.421)      | -0.001* (-1.750)   |       | -0.091 (-0.127)          | -0.906** (-2.289) |       |
| Ger. Ifo        | 0.017 (0.704)        | 0.009 (0.408)      |       | 1.291 (0.614)            | 3.884* (1.769)    |       |
| US Mon. Pol.    | 0.149*** (49.53)     | 0.017 (0.242)      | *     | -29.38*** (-7.585)       | 6.855* (1.763)    | ***   |
| US NAPM         | 0.003 (0.371)        | 0.005 (0.356)      |       | -0.186 (-0.196)          | 2.135** (2.193)   | *     |
| US Nonf. Payr.  | -0.003 (-0.243)      | -0.004 (-0.701)    |       | 2.685** (2.518)          | 0.893** (2.046)   | *     |
| US Indus. Prod. | 0.005 (0.460)        | 0.004 (0.930)      |       | 0.270 (0.213)            | -0.853 (-1.071)   |       |
| US GDP          | 0.003 (0.099)        | 0.002 (0.337)      |       | 2.797 (1.451)            | -0.775 (-0.636)   | *     |
| US Cons. Conf.  | 0.006 (0.285)        | 0.016 (0.755)      |       | 4.767*** (2.725)         | 0.825 (0.287)     |       |
| US Retail Sales | 0.002 (0.243)        | -0.004 (-0.388)    |       | -0.050 (-0.042)          | 1.448*** (2.890)  |       |
| US CPI          | -0.037 (-1.082)      | -0.019*** (-2.840) |       | 4.535** (2.279)          | 0.870 (1.292)     | *     |

\*/\*\*/\*\*\* denotes significance at the 1/5/10% level. Numbers in brackets are t-statistics. “sign.” indicates presence of significant nonlinear effects.

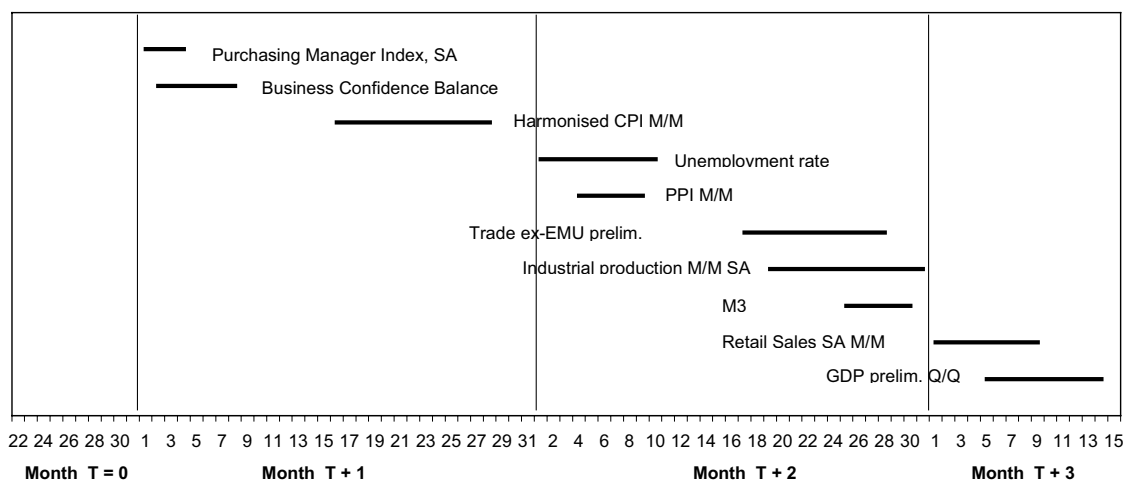
**Table 11b: Deviations from announcement mean – nonlinear effects for US mean equation, 1993-2002**

|                 | US mean equation |                   |       | US variance equation |                   |       |
|-----------------|------------------|-------------------|-------|----------------------|-------------------|-------|
|                 | Small deviation  | large deviation   | sign. | small deviation      | large deviation   | sign. |
| Ger. Mon. Pol.  | -0.044 (-1.031)  | 0.040 (0.381)     |       | 1.319 (0.717)        | 7.913** (2.293)   | *     |
| Ger. CPI        | 0.011 (0.656)    | -0.013 (-1.349)   |       | 0.326 (0.361)        | 0.215 (0.419)     |       |
| Ger. M3         | 0.007 (0.219)    | -0.012***(-3.376) |       | -0.048 (-0.024)      | -1.735** (-2.236) |       |
| Ger. Unemp.     | -0.011 (-0.726)  | 0.000 (0.267)     |       | 0.678 (1.004)        | -0.805** (-2.146) | *     |
| Ger. Ifo        | 0.086 (1.552)    | 0.037 (1.258)     |       | 4.256** (2.118)      | -1.259 (-0.605)   | *     |
| US Mon. Pol.    | 0.295 (1.162)    | 0.485** (2.424)   |       | 6.317* (1.713)       | 12.77*** (3.471)  |       |
| US NAPM         | 0.074*** (4.096) | 0.035 (1.086)     | *     | 0.673 (0.753)        | 2.814*** (3.070)  | *     |
| US Nonf. Payr.  | 0.114*** (3.451) | 0.057*** (4.071)  | *     | 3.044*** (3.020)     | 1.046** (2.538)   | *     |
| US Indus. Prod. | -0.006 (-0.226)  | 0.044*** (3.028)  | *     | 0.743 (0.618)        | 0.151 (0.200)     |       |
| US GDP          | -0.082 (-0.705)  | -0.001 (-0.077)   |       | 5.661*** (3.118)     | -0.812 (-0.704)   | ***   |
| US Cons. Conf.  | 0.159*** (5.457) | 0.080** (2.208)   | *     | 0.183 (0.111)        | -0.969 (-0.355)   |       |
| US Retail Sales | 0.092** (2.378)  | 0.023* (1.890)    | *     | 3.254*** (2.882)     | 0.231 (0.489)     | **    |
| US CPI          | 0.088*** (4.489) | 0.023* (1.758)    | ***   | -2.349 (-1.233)      | 0.332 (0.520)     |       |

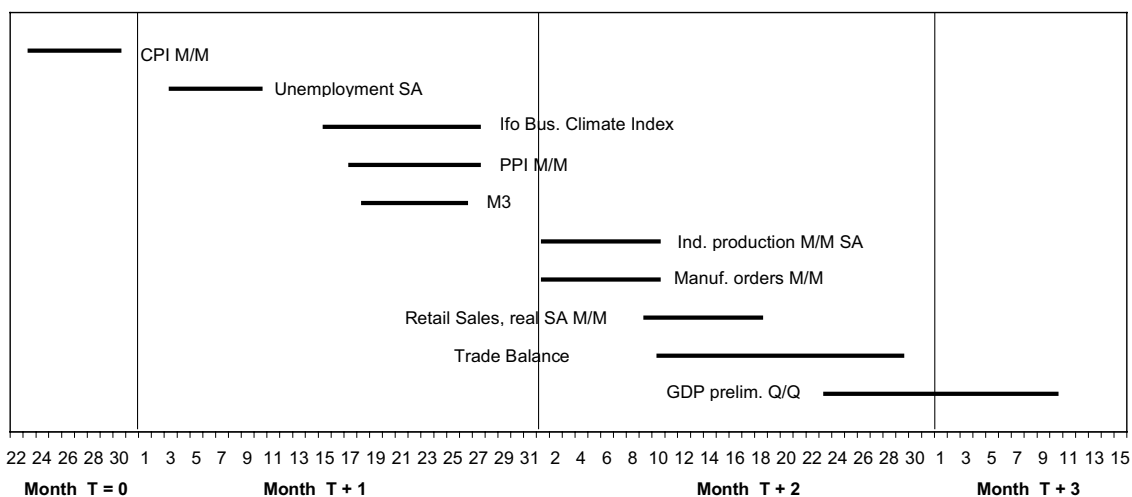
\*/\*\*/\*\* denotes significance at the 1/5/10% level. Numbers in brackets are t-statistics. “sign.” indicates presence of significant nonlinear effects.

**Figure 1: Distribution of release days of macroeconomic announcements**

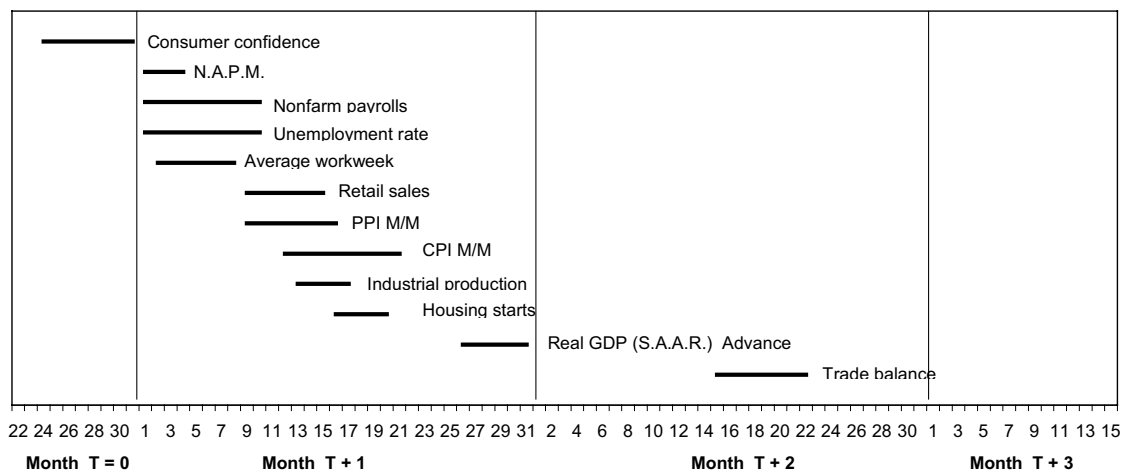
**Euro Area Macroeconomic Announcement Dates**



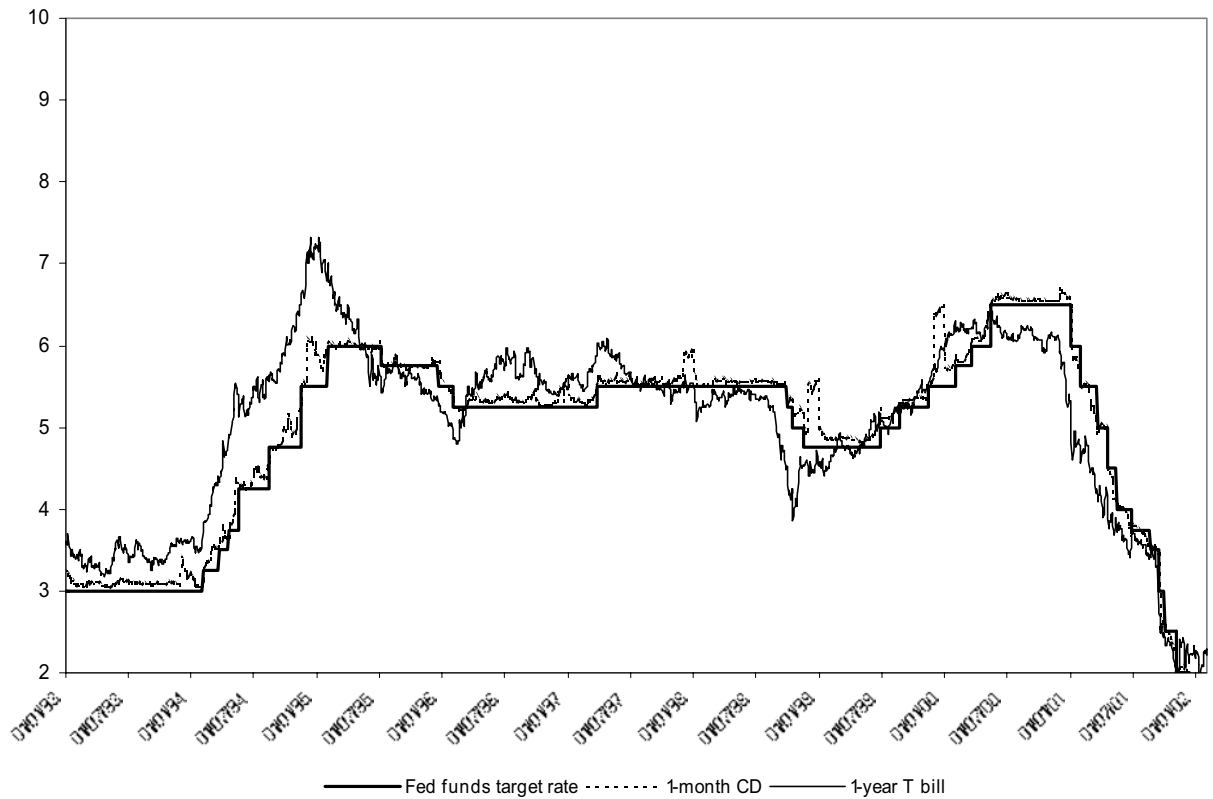
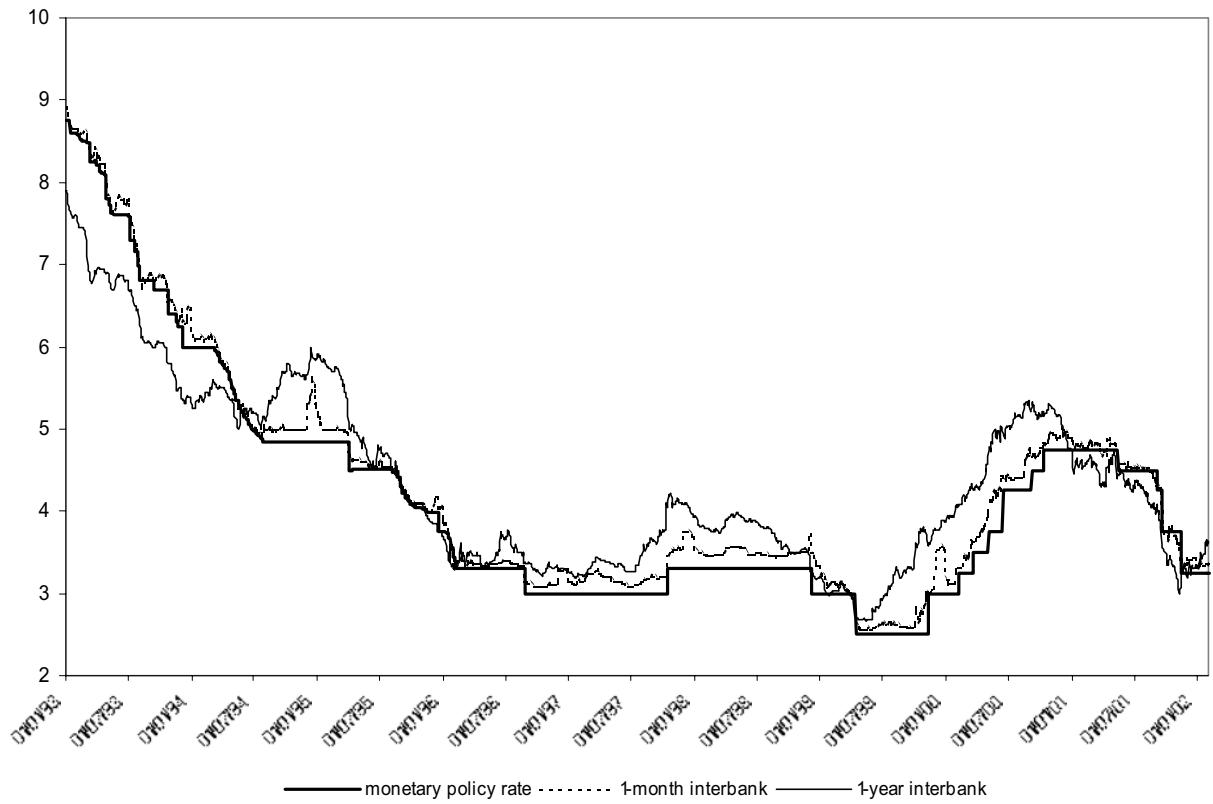
**German Macroeconomic Announcement Dates**



**US Macroeconomic Announcement Dates**

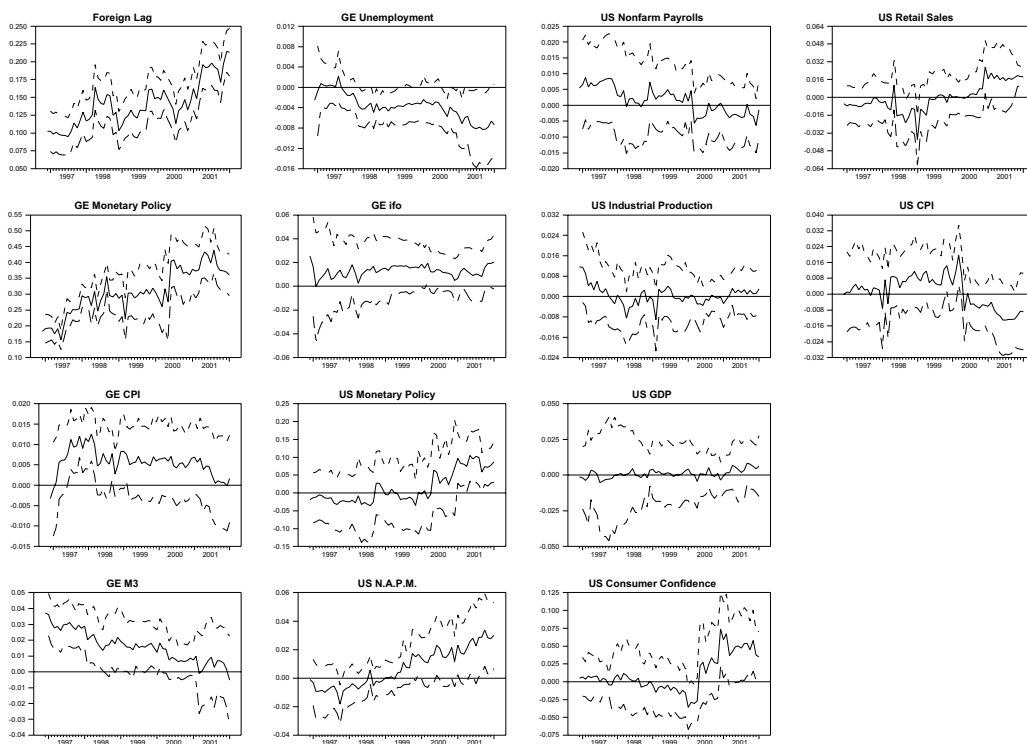


**Figure 2: Monetary policy and market interest rates,  
Germany/euro area and US, 1993-2002 (in %)**



**Figure 3: Rolling window parameter estimates of (5)-(7)  
Germany and US, 1 year rates, January 1993 – January 2002**

**German mean equation**



**US mean equation**

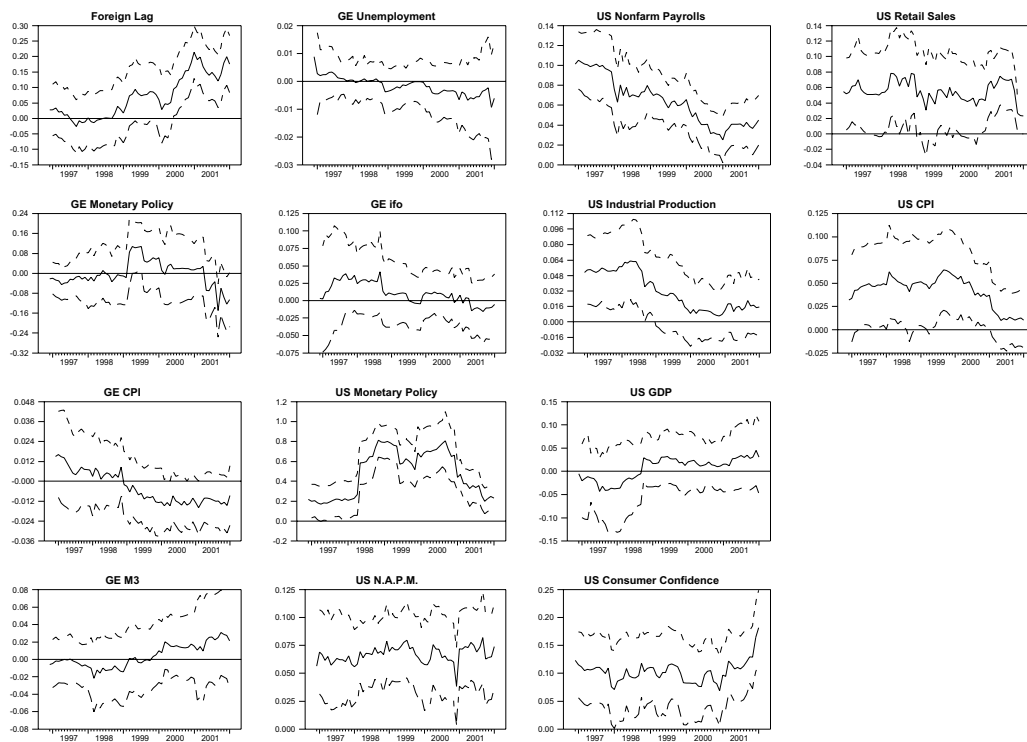
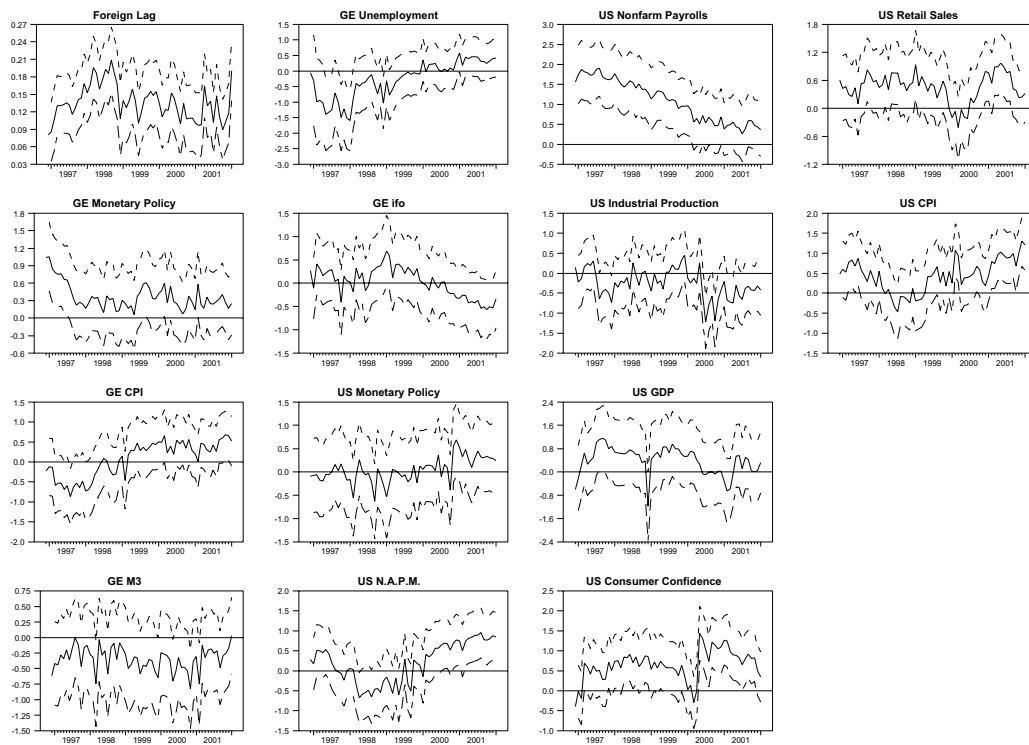
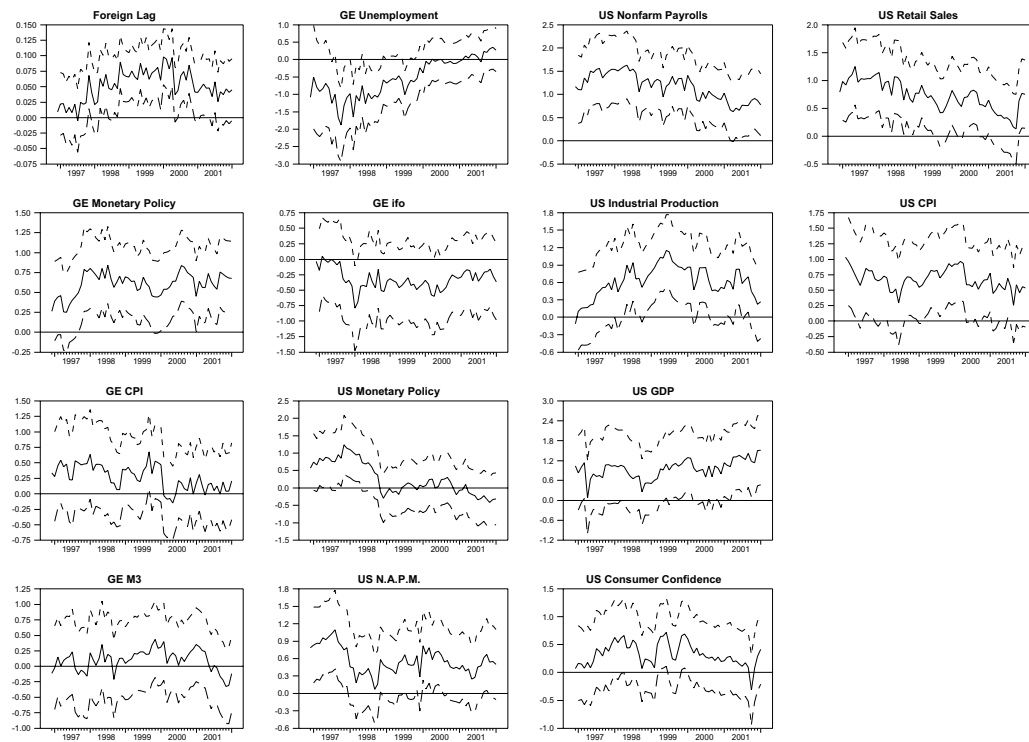


Figure 3 (continued)

German variance equation



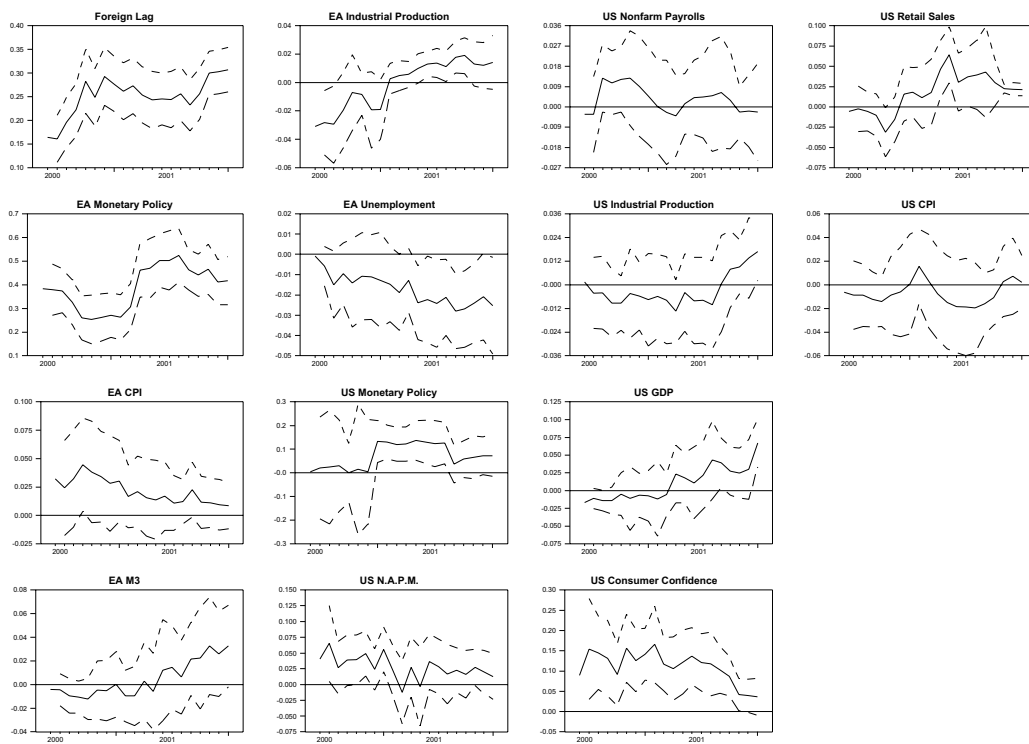
US variance equation



Note: x-axis values correspond to the end point of each rolling window; dotted lines: 90% confidence bands

**Figure 4: Rolling window parameter estimates of (5)-(7)  
Euro Area and US, 1 year rates, January 1999 – January 2002**

**EA mean equation**



**US mean equation**

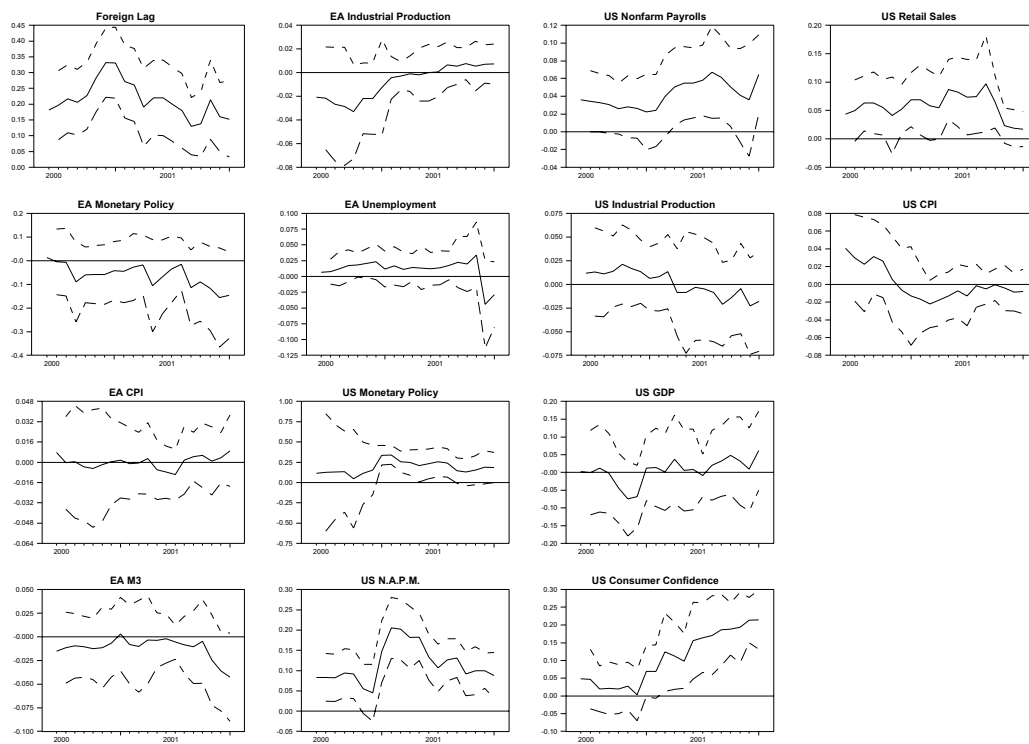
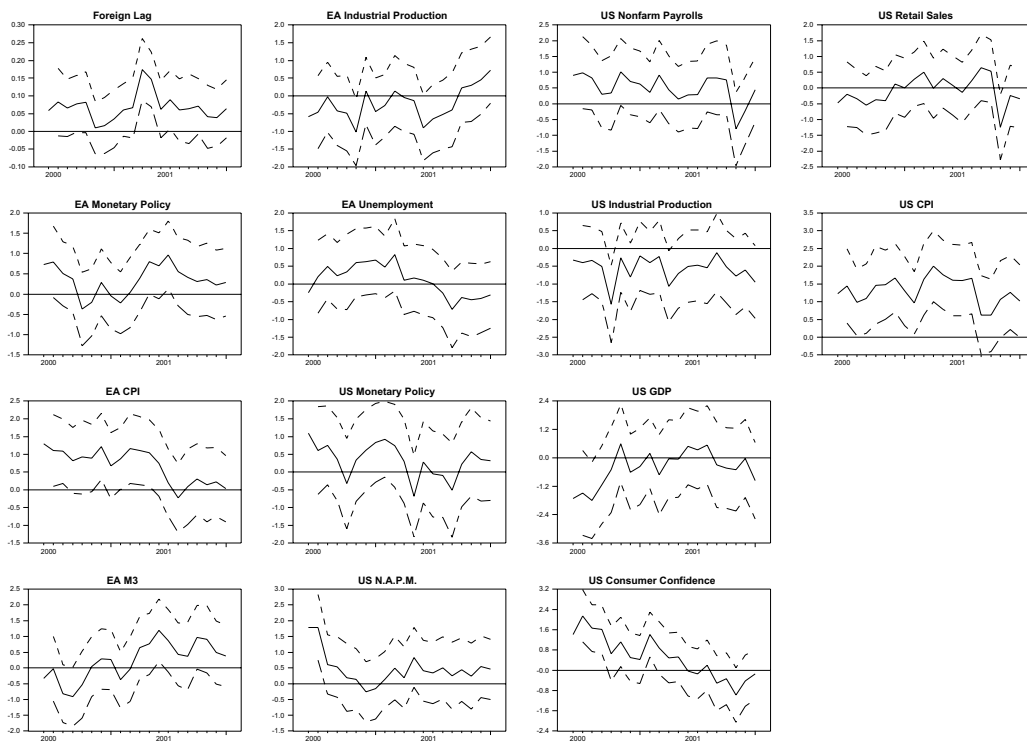
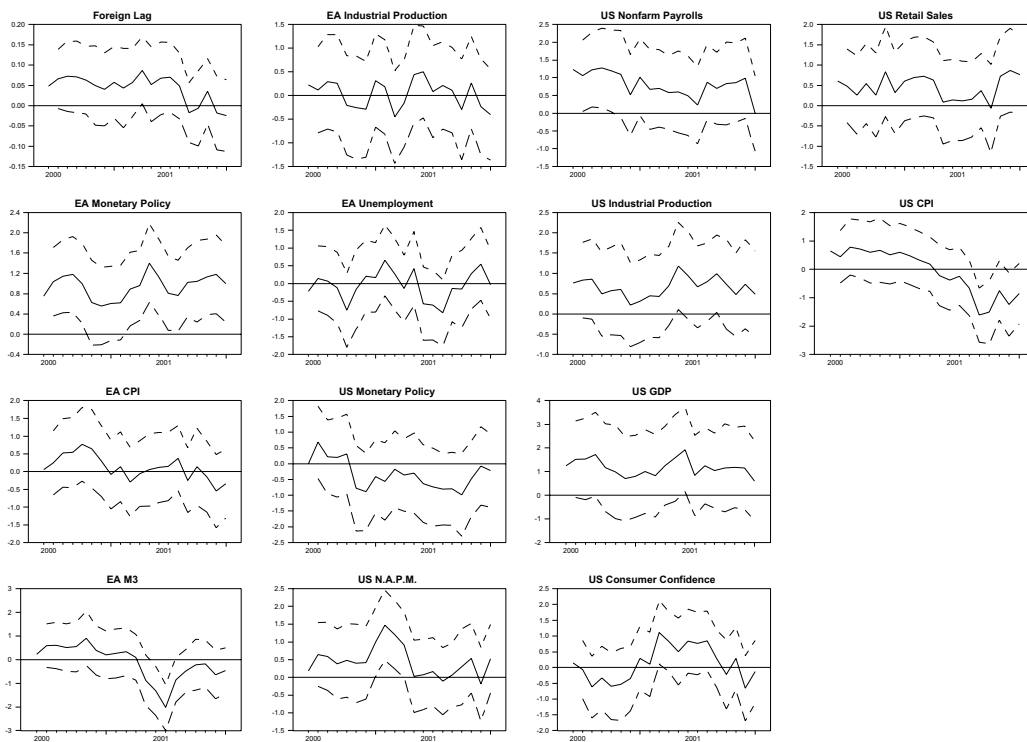


Figure 4 (continued)

EA variance equation



US variance equation



Note: x-axis values correspond to the end point of each rolling window; dotted lines: 90% confidence bands



## European Central Bank working paper series

For a complete list of Working Papers published by the ECB, please visit the ECB's website (<http://www.ecb.int>).

- I 13 “Financial frictions and the monetary transmission mechanism: theory, evidence and policy implications” by C. Bean, J. Larsen and K. Nikolov, January 2002.
- I 14 “Monetary transmission in the euro area: where do we stand?” by I. Angeloni, A. Kashyap, B. Mojon, D. Terlizzese, January 2002.
- I 15 “Monetary policy rules, macroeconomic stability and inflation: a view from the trenches” by A. Orphanides, December 2001.
- I 16 “Rent indices for housing in West Germany 1985 to 1998” by J. Hoffmann and C. Kurz., January 2002.
- I 17 “Hedonic house prices without characteristics: the case of new multiunit housing” by O. Bover and P. Velilla, January 2002.
- I 18 “Durable goods, price indexes and quality change: an application to automobile prices in Italy, 1988-1998” by G. M. Tomat, January 2002.
- I 19 “Monetary policy and the stock market in the euro area” by N. Cassola and C. Morana, January 2002.
- I 20 “Learning stability in economics with heterogenous agents” by S. Honkapohja and K. Mitra, January 2002.
- I 21 “Natural rate doubts” by A. Beyer and R. E. A. Farmer, February 2002.
- I 22 “New technologies and productivity growth in the euro area” by F. Visselaar and R. Albers, February 2002.
- I 23 “Analysing and combining multiple credit assessments of financial institutions” by E. Tabakis and A. Vinci, February 2002.
- I 24 “Monetary policy, expectations and commitment” by G. W. Evans and S. Honkapohja, February 2002.
- I 25 “Duration, volume and volatility impact of trades” by S. Manganelli, February 2002.
- I 26 “Optimal contracts in a dynamic costly state verification model” by C. Monnet and E. Quintin, February 2002.
- I 27 “Performance of monetary policy with internal central bank forecasting” by S. Honkapohja and K. Mitra, February 2002.
- I 28 “Openness, imperfect exchange rate pass-through and monetary policy” by F. Smets and R. Wouters, February 2002.

- 129 “Non-standard central bank loss functions, skewed risks, and certainty equivalence” by A. al-Nowaihi and L. Stracca, March 2002.
- 130 “Harmonized indexes of consumer prices: their conceptual foundations” by E. Diewert, March 2002.
- 131 “Measurement bias in the HICP: what do we know, and what do we need to know?” by M. A. Wynne and D. Rodríguez-Palenzuela, March 2002.
- 132 “Inflation dynamics and dual inflation in accession countries: a “new Keynesian” perspective” by O. Arratibel, D. Rodríguez-Palenzuela and C. Thimann, March 2002.
- 133 “Can confidence indicators be useful to predict short term real GDP growth?” by A. Mourougane and M. Roma, March 2002.
- 134 “The cost of private transportation in the Netherlands, 1992-1999” by B. Bode and J. Van Dalen, March 2002.
- 135 “The optimal mix of taxes on money, consumption and income” by F. De Fiore and P. Teles, April 2002.
- 136 “Retail bank interest rate pass-through: the new evidence at the euro area level” by G. de Bondt, April 2002.
- 137 “Equilibrium bidding in the eurosystem’s open market operations” by U. Bindseil, April 2002.
- 138 “New” views on the optimum currency area theory: what is EMU telling us?” by F. P. Mongelli, April 2002.
- 139 “On currency crises and contagion” by M. Fratzscher, April 2002.
- 140 “Price setting and the steady-state effects of inflation” by M. Casares, May 2002.
- 141 “Asset prices and fiscal balances” by F. Eschenbach and L. Schuknecht, May 2002.
- 142 “Modelling the daily banknotes in circulation in the context of the liquidity management of the European Central Bank”, by A. Cabrero, G. Camba-Mendez, A. Hirsch and F. Nieto, May 2002.
- 143 “A non-parametric method for valuing new goods”, by I. Crawford, May 2002.
- 144 “A failure in the measurement of inflation: results from a hedonic and matched experiment using scanner data”, by M. Silver and S. Heravi, May 2002.
- 145 “Towards a new early warning system of financial crises”, by M. Fratzscher and M. Bussiere, May 2002.
- 146 “Competition and stability – what’s special about banking?”, by E. Carletti and P. Hartmann, May 2002.

- 147 “Time-to-build approach in a sticky price, stricky wage optimizing monetary model, by M. Casares, May 2002.
- 148 “The functional form of yield curves” by V. Brousseau, May 2002.
- 149 “The Spanish block of the ESCB-multi-country model” by A. Estrada and A. Willman, May 2002.
- 150 “Equity and bond market signals as leading indicators of bank fragility” by R. Gropp, J. Vesala and G. Vulpes, June 2002.
- 151 “G-7 inflation forecasts” by F. Canova, June 2002.
- 152 “Short-term monitoring of fiscal policy discipline” by G. Camba-Mendez and A. Lamo, June 2002.
- 153 “Euro area production function and potential output: a supply side system approach” by A. Willman, June 2002.
- 154 “The euro bloc, the dollar bloc and the yen bloc: how much monetary policy independence can exchange rate flexibility buy in an interdependent world?” by M. Fratzscher, June 2002.
- 155 “Youth unemployment in the OECD: demographic shifts, labour market institutions, and macroeconomic shocks” by J. F. Jimeno and D. Rodriguez-Palenzuela, June 2002.
- 156 “Identifying endogenous fiscal policy rules for macroeconomic models” by J. J. Perez, and P. Hiebert, July 2002.
- 157 “Bidding and performance in repo auctions: evidence from ECB open market operations” by K. G. Nyborg, U. Bindseil and I. A. Strebulaev, July 2002.
- 158 “Quantifying Embodied Technological Change” by P. Sakellaris and D. J. Wilson, July 2002.
- 159 “Optimal public money” by C. Monnet, July 2002.
- 160 “Model uncertainty and the equilibrium value of the real effective euro exchange rate” by C. Detken, A. Dieppe, J. Henry, C. Marin and F. Smets, July 2002.
- 161 “The optimal allocation of risks under prospect theory” by L. Stracca, July 2002.
- 162 “Public debt asymmetries: the effect on taxes and spending in the European Union” by S. Krogstrup, August 2002.
- 163 “The rationality of consumers’ inflation expectations: survey-based evidence for the euro area” by M. Forsells and G. Kenny, August 2002.
- 164 “Euro area corporate debt securities market: first empirical evidence” by G. de Bondt, August 2002.

- 165 “The industry effects of monetary policy in the euro area” by G. Peersman and F. Smets, August 2002.
- 166 “Monetary and fiscal policy interactions in a micro-founded model of a monetary union” by R. M.W.J. Beetsma and H. Jensen, August 2002.
- 167 “Identifying the effects of monetary policy shocks on exchange rates using high frequency data” by J. Faust, J.H. Rogers, E. Swanson and J.H. Wright, August 2002.
- 168 “Estimating the effects of fiscal policy in OECD countries” by R. Perotti, August 2002.
- 169 “Modeling model uncertainty” by A. Onatski and N. Williams, August 2002.
- 170 “What measure of inflation should a central bank target?” by G. Mankiw and R. Reis, August 2002.
- 171 “An estimated stochastic dynamic general equilibrium model of the euro area” by F. Smets and R. Wouters, August 2002.
- 172 “Constructing quality-adjusted price indices: a comparison of hedonic and discrete choice models” by N. Jonker, September 2002.
- 173 “Openness and equilibrium determinacy under interest rate rules” by F. de Fiore and Z. Liu, September 2002.
- 174 “International monetary policy coordination and financial market integration” by A. Sutherland, September 2002.
- 175 “Monetary policy and the financial accelerator in a monetary union” by S. Gilchrist, J.O. Hairault and H. Kempf, September 2002.
- 176 “Macroeconomics of international price discrimination” by G. Corsetti and L. Dedola, September 2002.
- 177 “A theory of the currency denomination of international trade” by P. Bacchetta and E. van Wincoop, September 2002.
- 178 “Inflation persistence and optimal monetary policy in the euro area” by P. Benigno and J.D. López-Salido, September 2002.
- 179 “Optimal monetary policy with durable and non-durable goods” by C.J. Erceg and A.T. Levin, September 2002.
- 180 “Regional inflation in a currency union: fiscal policy vs. fundamentals” by M. Duarte and A.L. Wolman, September 2002.
- 181 “Inflation dynamics and international linkages: a model of the United States, the euro area and Japan” by G. Coenen and V. Wieland, September 2002.
- 182 “The information content of real-time output gap estimates, an application to the euro area” by G. Rünstler, September 2002.

- 183 “Monetary policy in a world with different financial systems” by E. Faia, October 2002.
- 184 “Efficient pricing of large value interbank payment systems” by C. Holthausen and J.-C. Rochet, October 2002.
- 185 “European integration: what lessons for other regions? The case of Latin America” by E. Dorrucchi, S. Firpo, M. Fratzscher and F. P. Mongelli, October 2002.
- 186 “Using money market rates to assess the alternatives of fixed vs. variable rate tenders: the lesson from 1989-1998 data for Germany” by M. Manna, October 2002.
- 187 “A fiscal theory of sovereign risk” by M. Uribe, October 2002.
- 188 “Should central banks really be flexible?” by H. P. Grüner, October 2002.
- 189 “Debt reduction and automatic stabilisation” by P. Hiebert, J. J. Pérez and M. Rostagno, October 2002.
- 190 “Monetary policy and the zero bound to interest rates: a review” by T. Yates, October 2002.
- 191 “The fiscal costs of financial instability revisited” by L. Schuknecht and F. Eschenbach, November 2002.
- 192 “Is the European Central Bank (and the United States Federal Reserve) predictable?” by G. Perez-Quiros and J. Sicilia, November 2002.
- 193 “Sustainability of public finances and automatic stabilisation under a rule of budgetary discipline” by J. Marín, November 2002.
- 194 “Sensitivity analysis of volatility: a new tool for risk management” by S. Manganelli, V. Ceci and W. Vecchiato, November 2002.
- 195 “In-sample or out-of-sample tests of predictability: which one should we use?” by A. Inoue and L. Kilian, November 2002.
- 196 “Bootstrapping autoregressions with conditional heteroskedasticity of unknown form” by S. Gonçalves and L. Kilian, November 2002.
- 197 “A model of the Eurosystem’s operational framework for monetary policy implementation” by C. Ewerhart, November 2002.
- 198 “Extracting risk neutral probability densities by fitting implied volatility smiles: some methodological points and an application to the 3M Euribor futures option prices” by A. B. Andersen and T. Wagener, December 2002.
- 199 “Time variation in the tail behaviour of bund futures returns” by T. Werner and C. Upper, December 2002.

200 “Interdependence between the euro area and the US: what role for EMU?” by M. Ehrmann and M. Fratzscher, December 2002.